

---

## Product Datasheet

### CIDEA Antibody (orb1239982)

**Description**

CIDEA Antibody

**Species/Host**

Rabbit

**Reactivity**

Human

**Conjugation**

Unconjugated

**Tested Applications**

ELISA, IF, IHC-P, WB

**Immunogen**

CIDE-A antibody was raised against a 18 amino acid peptide near the carboxy terminus of human CIDE-A. The immunogen is located within the last 50 amino acids of CIDE-A.

**Target**

CIDEA

**Preservatives**

CIDE-A Antibody is supplied in PBS containing 0.02% sodium azide.

**Form/Appearance**

Liquid

**Concentration**

1 mg/ml

**Storage**

CIDE-A antibody can be stored at 4°C for three months and -20°C, stable for up to one year. As with all antibodies care should be taken to avoid repeated freeze thaw cycles. Antibodies should not be exposed to prolonged high temperatures.

**Note**

For research use only

**Application notes**

CIDE-A antibody can be used for detection of CIDE-A by Western blot at 2 µg/mL. An approximately 23 kDa band can be detected. Antibody can also be used for immunohistochemistry starting at 5 µg/mL. For immunofluorescence start at 20 µg/mL. Antibody validated: Western Blot in human samples; Immunohistochemistry in human samples and Immunofluorescence in human samples. All other applications and species not yet tested.

**Isotype**

IgG

**Clonality**

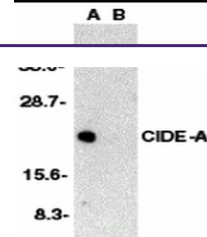
Polyclonal

**MW**

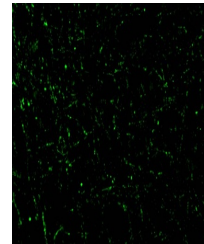
23 kDa

**Uniprot ID**
[O60543](#)
**NCBI**
[AF041378](#)
**Dilution Range**

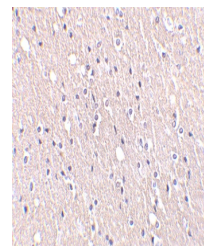
CIDE-A antibody can be used for detection of CIDE-A by Western blot at 2 µg/mL. An approximately 23 kDa band can be detected. Antibody can also be used for immunohistochemistry starting at 5 µg/mL.



Western blot analysis of CIDE-A in human...



Immunofluorescence of CIDE-A in Human Br...



Immunohistochemistry of CIDE-A in human ...