
Product Datasheet

SARS-CoV-2 (COVID-19) Spike 681P Antibody (orb1239981)

Description

SARS-CoV-2 (COVID-19) Spike 681P Antibody

Species/Host

Rabbit

Reactivity

Virus

Conjugation

Unconjugated

Tested Applications

ELISA, IF, WB

Immunogen

Anti-SARS-CoV-2 (COVID-19) Spike Antibody (cleavage site) (orb1239981) was raised against a peptide corresponding to 12 amino acids near the center of SARS-CoV-2 (COVID-19) Spike glycoprotein. The immunogen is located within 650-700 amino acids of SARS-CoV-2 (COVID-19) Spike protein.

Target

S

Preservatives

SARS-CoV-2 (COVID-19) Spike Antibody (cleavage site) is supplied in PBS containing 0.02% sodium azide.

Form/Appearance

Liquid

Concentration

1 mg/mL

Storage

SARS-CoV-2 (COVID-19) Spike antibody (cleavage site) can be stored at 4°C for three months and -20°C, stable for up to one year. As with all antibodies care should be taken to avoid repeated freeze thaw cycles. Antibodies should not be exposed to prolonged high temperatures.

Note

For research use only

Isotype

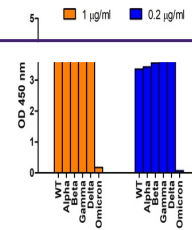
IgG

Clonality

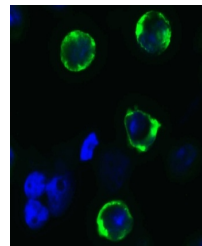
Polyclonal

Uniprot ID
[P0DTC2](#)
NCBI
[QHD43416](#)
Dilution Range

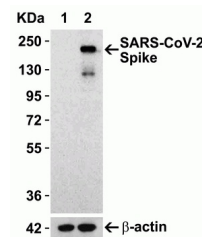
WB: 0.5-4 µg/mL; IF: 20 µg/mL. Antibody validated: Western Blot in human samples; Immunofluorescence in human samples. SARS-CoV-2 (COVID-19) Spike Antibody (cleavage site) can be used for the detection of SARS-CoV-2 (COVID-19) Spike protein in ELISA. It will detect 4 ng of free peptide at 1 µg/mL. Antibody can also be used for as capture antibody in Sandwich Elisa at 10



SARS-Cov-2 Spike 681P Antibodies Specifici...



Immunofluorescence Validation of SARS-Co...



Overexpression Validation in Spike Trans...