
Product Datasheet

CIDEB Antibody (orb1239980)

Description

CIDEB Antibody

Species/Host

Rabbit

Reactivity

Human, Mouse, Rat

Conjugation

Unconjugated

Tested

ELISA, IF, IHC-P, WB

Applications
Immunogen

CIDE-B antibody was raised against a peptide corresponding to 15 amino acids near the carboxy terminus of human CIDE-B. The immunogen is located within the last 50 amino acids of CIDE-B.

Target

CIDEB

Preservatives

CIDE-B Antibody is supplied in PBS containing 0.02% sodium azide.

Form/Appearance

Liquid

Concentration

1 mg/ml

Storage

CIDE-B antibody can be stored at 4°C for three months and -20°C, stable for up to one year. As with all antibodies care should be taken to avoid repeated freeze thaw cycles. Antibodies should not be exposed to prolonged high temperatures.

Note

For research use only

Application notes

CIDE-B antibody can be used for detection of CIDE-B by Western blot at 0.5 - 2 µg/mL. Antibody can also be used for immunohistochemistry starting at 5 µg/mL. For immunofluorescence start at 20 µg/mL. Antibody validated: Western Blot in mouse samples; Immunohistochemistry in human samples and Immunofluorescence in human samples. All other applications and species not yet tested.

Isotype

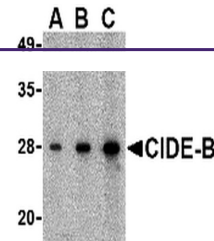
IgG

Clonality

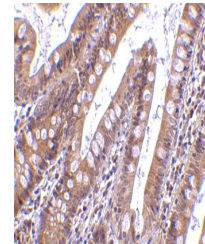
Polyclonal

Uniprot ID
[Q9UHD4](#)
NCBI
[AF218586](#)
Dilution Range

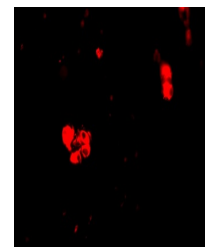
CIDE-B antibody can be used for detection of CIDE-B by Western blot at 0.5 - 2 µg/mL. Antibody can also be used for immunohistochemistry starting at 5 µg/mL. For immunofluorescence start at 20 µg/mL. Antibody validated: Western Blot in mouse samples; Immunohistochemistry in human samples



Western blot analysis of CIDEB in mouse...



Immunohistochemistry of CIDEB in human ...



Immunofluorescence of CIDEB in Human Sm...