
Product Datasheet

CLIP1 Antibody (orb1239968)

Description

CLIP1 Antibody

Species/Host

Rabbit

Reactivity

Human, Mouse, Rat

Conjugation

Unconjugated

Tested Applications

ELISA, IF, WB

Immunogen

CLIP170 antibody was raised against a 17 amino acid synthetic peptide from near the carboxy terminus of human CLIP170. The immunogen is located within amino acids 1340 - 1390 of CLIP170.

Target

CLIP1

Preservatives

CLIP170 Antibody is supplied in PBS containing 0.02% sodium azide.

Form/Appearance

Liquid

Concentration

1 mg/mL

Storage

CLIP170 antibody can be stored at 4°C for three months and -20°C, stable for up to one year. As with all antibodies care should be taken to avoid repeated freeze thaw cycles. Antibodies should not be exposed to prolonged high temperatures.

Note

For research use only

Application notes

CLIP170 antibody can be used for detection of CLIP170 by Western blot at 0.5 - 1 µg/mL. Antibody can also be used for immunofluorescence starting at 20 µg/mL. For immunofluorescence start at 20 µg/mL. Antibody validated: Western Blot in rat samples and Immunofluorescence in human samples. All other applications and species not yet tested.

Isotype

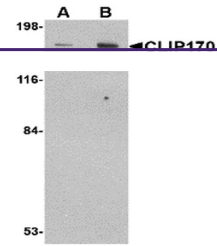
IgG

Clonality

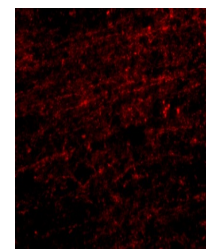
Polyclonal

Uniprot ID
[P30622](#)
NCBI
[NP_002947](#)
Dilution Range

CLIP170 antibody can be used for detection of CLIP170 by Western blot at 0.5 - 1 µg/mL. Antibody can also be used for immunofluorescence starting at 20 µg/mL. For immunofluorescence start at 20 µg/mL. Antibody validated: Western Blot in rat samples and Immunofluorescence in human samples. All other applications and species not yet tested.



Western blot analysis of CLIP170 in rat ...



Immunofluorescence of CLIP170 in human br...