
Product Datasheet

CABS1 Antibody (orb1239967)

Description

CABS1 Antibody

Species/Host

Rabbit

Reactivity

Human, Rat

Conjugation

Unconjugated

Tested

ELISA, IHC-P, WB

Applications
Immunogen

CLPH antibody was raised against a 15 amino acid synthetic peptide from near the carboxy terminus of human CLPH. The immunogen is located within the last 50 amino acids of CLPH.

Target

CABS1

Preservatives

CLPH Antibody is supplied in PBS containing 0.02% sodium azide.

Form/Appearance

Liquid

Concentration

1 mg/mL

Storage

CLPH antibody can be stored at 4°C for three months and -20°C, stable for up to one year. As with all antibodies care should be taken to avoid repeated freeze thaw cycles. Antibodies should not be exposed to prolonged high temperatures.

Note

For research use only

Application notes

CLPH antibody can be used for detection of CLPH by Western blot at 1 µg/mL. Antibody can also be used for immunohistochemistry starting at 5 µg/mL. Antibody validated: Western Blot in human samples and Immunohistochemistry in human samples. All other applications and species not yet tested.

Isotype

IgG

Clonality

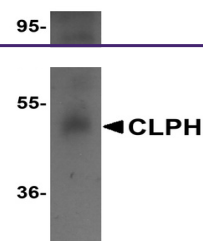
Polyclonal

Uniprot ID
[Q96KC9](#)
NCBI
[NP_149113](#)
Dilution Range

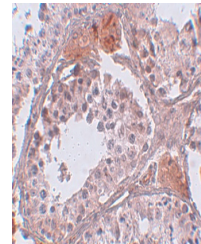
CLPH antibody can be used for detection of CLPH by Western blot at 1 µg/mL. Antibody can also be used for immunohistochemistry starting at 5 µg/mL. Antibody validated: Western Blot in human samples and Immunohistochemistry in human samples. All other applications and species not yet tested.

Expiration Date

12 months from date of receipt.



Western blot analysis of CLPH in human t...



Immunohistochemistry of CLPH in human te...