

Product Datasheet

SAMHD1 (phospho Thr592) Antibody (orb1239966)

| | |
|----------------------------|--|
| Description | SAMHD1 (phospho Thr592) Antibody |
| Species/Host | Rabbit |
| Reactivity | Human, Mouse |
| Conjugation | Unconjugated |
| Tested Applications | ELISA, IF, IHC, WB |
| Immunogen | Anti-SAMHD1 (phospho Thr592) antibody (orb1239966) was raised against a phosphorylated peptide corresponding to 18 amino acids near the carboxy terminus of human Phospho-SAMHD1 surrounding T592. |
| Target | SAMHD1 (phospho Thr592) |
| Preservatives | SAMHD1 (phospho Thr592) antibody is supplied in PBS containing 0.02% sodium azide. |
| Form/Appearance | Liquid |
| Concentration | 1 mg/mL |
| Storage | Maintain refrigerated at 2-8°C for up to 2 weeks. For long term storage store at -20°C in small aliquots to prevent freeze-thaw cycles. |
| Note | For research use only |
| Isotype | IgG |
| Clonality | Polyclonal |
| MW | Predicted: 72kD Observed: 72 kD |
| Uniprot ID | Q9Y3Z3 |
| NCBI | NP_056289 |

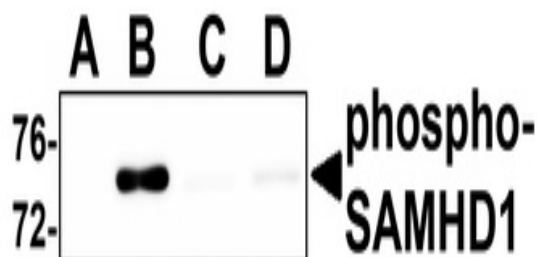
Biorbyt Ltd.

7 Signet Court, Swann's Road,
Cambridge, CB5 8LA, United Kingdom
Email: info@biorbyt.com, support@biorbyt.com
Phone: [+44 \(0\) 1223 859-353](tel:+441223859353) | Fax: [+1 \(415\) 651-8558](tel:+14156518558)

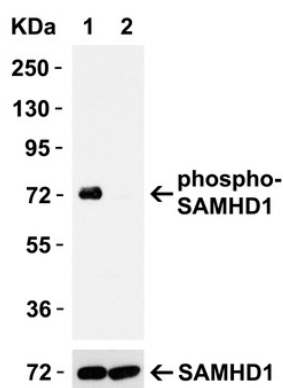
Biorbyt LLC.

68 TW Alexander Drive,
Durham, NC, 27713, United States
Email: info@biorbyt.com, support@biorbyt.com
Phone: [+1 \(415\) 906-5211](tel:+14159065211) | Fax: [+1 \(415\) 651-8558](tel:+14156518558)

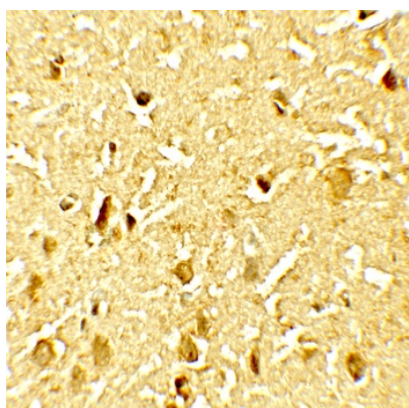
Expiration Date 12 months from date of receipt.



Western Blot Validation in Human 293 Cells. Loading: 15 µg of lysates per lane. Antibodies: SAMHD1 (phospho Thr592) orb1239966 (1 µg/mL), 1h incubation at RT in 5% NFDm/TBST. Secondary: Goat anti-rabbit IgG HRP conjugate at 1:10000 dilution. 293 cells were transfected with (A) empty expression vector, (B) wild-type SAMHD1, (C) SAMHD1 (mutation T592A) and (D) SAMHD1 (mutation T592E).



Mutant Validation in 293T Transfected Cells. Loading: 15 µg of lysates per lane. Antibodies: SAMHD1 (phospho Thr592) orb1239966 (0.05 µg/mL), 1h incubation at RT in 5% NFDm/TBST. Secondary: Goat anti-rabbit IgG HRP conjugate at 1:10000 dilution. 293 cells were transfected with (1) wild-type SAMHD1 or (2) SAMHD1 (mutation T592A).



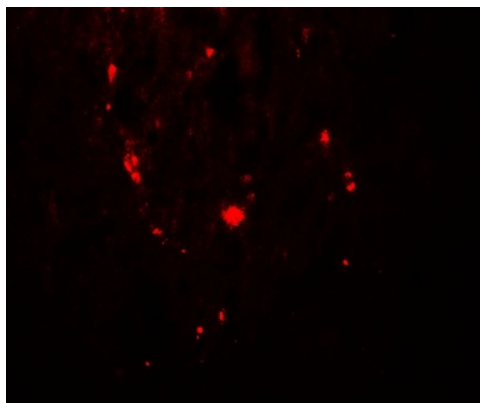
Immunohistochemistry Validation of SAMHD1 (phospho Thr592) in Human Brain Tissue. Immunohistochemical analysis of paraffin-embedded Human Brain Tissue using anti-SAMHD1 (phospho Thr592) antibody (orb1239966) at 2.5 µg/ml. Tissue was fixed with formaldehyde and blocked with 10% serum for 1 h at RT; antigen retrieval was by heat mediation with a citrate buffer (pH6). Samples were incubated with primary antibody overnight at 4 °C. A goat anti-rabbit IgG H&L (HRP) at 1/250 was used as secondary. Counter stained with Hematoxylin.

Biorbyt Ltd.

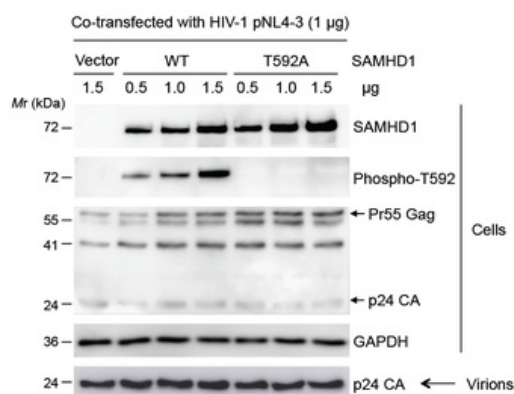
7 Signet Court, Swann's Road,
Cambridge, CB5 8LA, United Kingdom
Email: info@biorbyt.com, support@biorbyt.com
Phone: [+44 \(0\) 1223 859-353](tel:+44(0)1223859353) | Fax: [+1 \(415\) 651-8558](tel:+1(415)6518558)

Biorbyt LLC.

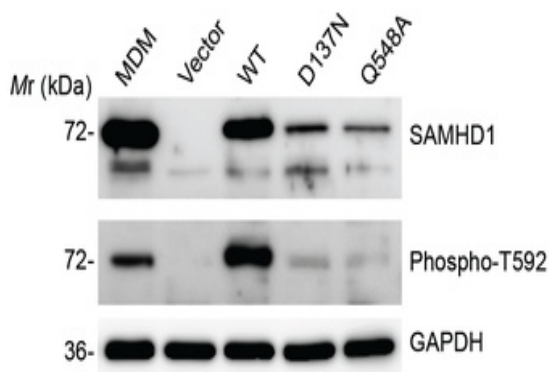
68 TW Alexander Drive,
Durham, NC, 27713, United States
Email: info@biorbyt.com, support@biorbyt.com
Phone: [+1 \(415\) 906-5211](tel:+1(415)9065211) | Fax: [+1 \(415\) 651-8558](tel:+1(415)6518558)



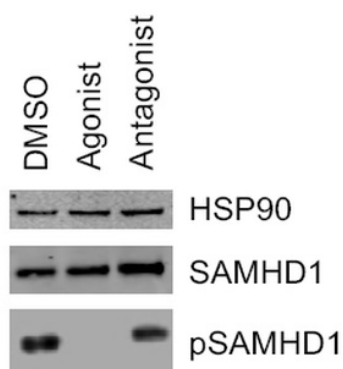
Immunofluorescence Validation of SAMHD1 (phospho Thr592) in Human Brain Tissue. Immunofluorescent analysis of 4% paraformaldehyde-fixed Human Brain Tissue labeling phospho SAMHD1 (phospho Thr592) with orb1239966 at 20 µg/mL, followed by goat anti-rabbit IgG secondary antibody at 1/500 dilution (red).



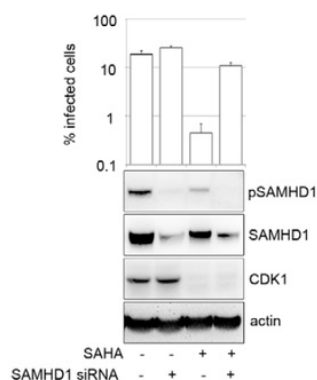
Mutant Validation of SAMHD1 (phospho Thr592) in human embryonic kidney (HEK) 293T cells (Antonucci et al., 2016). WB analysis showed protein expression level of SAMHD1 (phospho Thr592) detected by anti-SAMHD1 (phospho Thr592) antibody (orb1239966). SAMHD1 (phospho Thr592) expression was detected only in SAMHD1 WT, but neither in SAMHD1 T592A mutant nor the control group (empty vector).



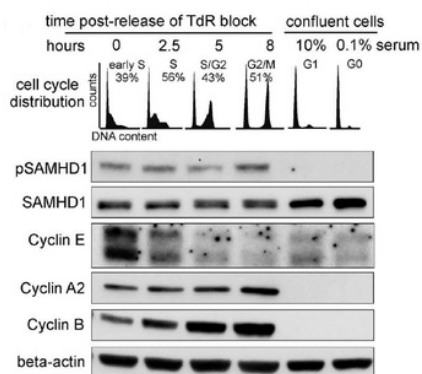
Mutant Validation of SAMHD1 (phospho Thr592) in primary monocyte-derived macrophages (MDM) from a healthy donor and human monocytic U937 cells (Antonucci et al., 2016). The expression levels of SAMHD1 (phospho Thr592) detected by anti-SAMHD1 (phospho Thr592) antibody (orb1239966) in SAMHD1 mutants (D137N & Q548A) of U937 cells are lower than those of SAMHD1 WT or MDM.



Western Blot Validation of SAMHD1 (phospho Thr592) in herpes simplex viruses (HSV-1) infected human macrophages (Kueck et al., 2018). HSV-1 infected macrophages were treated with aryl hydrocarbon receptor (AhR) agonist or antagonist. WB analysis showed protein expression level of SAMHD1 (phospho Thr592) detected by anti-SAMHD1 (phospho Thr592) antibody (orb1239966). AhR agonist repressed SAMHD1 (phospho Thr592) expression as compared to the control group or AhR antagonist. Representative of 2 different donors.



KD Validation of SAMHD1 (phospho Thr592) in human Macrophages (Mlcochova et al., 2017). SAMHD1 (phospho Thr592) signal detected by anti-SAMHD1 (phospho Thr592) antibody (orb1239966) in SAMHD1 knockdown cells were disrupted as compared to control.



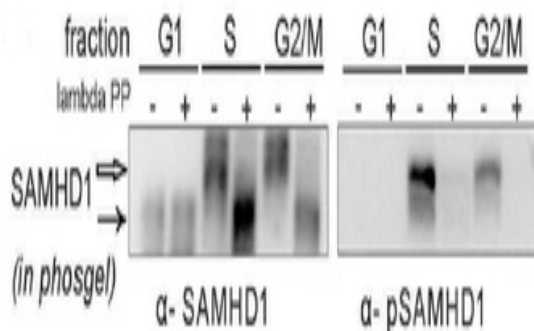
Western Blot Validation of SAMHD1 (phospho Thr592) in normal human fibroblasts (Tramentozzi et al., 2018). WB analysis showed protein expression level of SAMHD1 (phospho Thr592) detected by anti-SAMHD1 (phospho Thr592) antibody (orb1239966). SAMHD1 (phospho Thr592) expression was detected in S and G2/M phase of cell cycle but not in G1 phase.

Biorbyt Ltd.

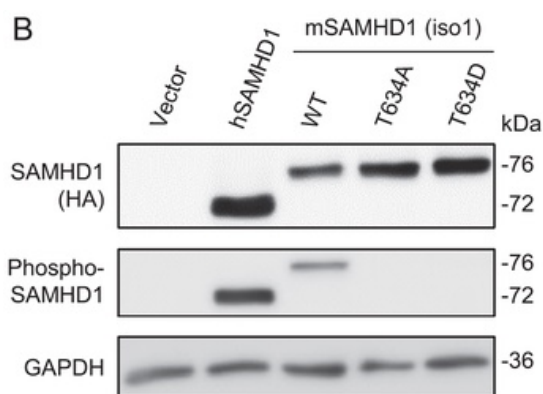
7 Signet Court, Swann's Road,
Cambridge, CB5 8LA, United Kingdom
Email: info@biorbyt.com, support@biorbyt.com
Phone: [+44 \(0\) 1223 859-353](tel:+44(0)1223859353) | Fax: [+1 \(415\) 651-8558](tel:+1(415)6518558)

Biorbyt LLC.

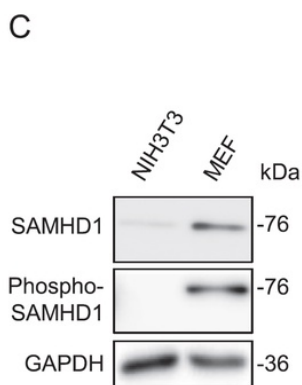
68 TW Alexander Drive,
Durham, NC, 27713, United States
Email: info@biorbyt.com, support@biorbyt.com
Phone: [+1 \(415\) 906-5211](tel:+1(415)9065211) | Fax: [+1 \(415\) 651-8558](tel:+1(415)6518558)



Regulated Expression Validation of SAMHD1 (phospho Thr592) in parental THP-1 cells (Tramentozzi et al., 2018). WB analysis showed protein expression level of SAMHD1 (phospho Thr592) detected by anti-SAMHD1 (phospho Thr592) antibody (orb1239966). SAMHD1 (phospho Thr592) expression was significantly decreased in S and G2/M phase with the treatment of lambda-phosphatase.



Western Blot Validation of SAMHD1 (phospho Thr592) in Mouse SAMHD1 Transfected Cells (Wang et al., 2016). WB analysis showed protein expression level of SAMHD1 (phospho Thr592) detected by anti-SAMHD1 (phospho Thr592) antibody (orb1239966). Mouse SAMHD1 was detected in transfected cells with WT mSAMHD1, but not with mutants.



Western Blot Validation of SAMHD1 (phospho Thr592) in Mouse Cells (Wang et al., 2016). WB analysis showed protein expression level of SAMHD1 (phospho Thr592) detected by anti-SAMHD1 (phospho Thr592) antibody (orb1239966). Mouse SAMHD1 was detected mouse MEF cells.