
Product Datasheet

CMPK2 Antibody (orb1239965)

Description

CMPK2 Antibody

Species/Host

Rabbit

Reactivity

Human, Mouse, Rat

Conjugation

Unconjugated

Tested

ELISA, IF, WB

Applications
Immunogen

CMPK2 antibody was raised against a 19 amino acid synthetic peptide near the carboxy terminus of human CMPK2. The immunogen is located within amino acids 370 - 420 of CMPK2.

Target

CMPK2

Preservatives

CMPK2 Antibody is supplied in PBS containing 0.02% sodium azide.

Form/Appearance

Liquid

Concentration

1 mg/mL

Storage

CMPK2 antibody can be stored at 4°C for three months and -20°C, stable for up to one year. As with all antibodies care should be taken to avoid repeated freeze thaw cycles. Antibodies should not be exposed to prolonged high temperatures.

Note

For research use only

Application notes

CMPK2 antibody can be used for detection of CMPK2 by Western blot at 1 µg/mL. For immunofluorescence start at 20 µg/mL. Antibody validated: Western Blot in rat samples and Immunofluorescence in human samples. All other applications and species not yet tested.

Isotype

IgG

Clonality

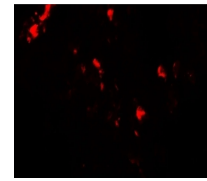
Polyclonal

MW

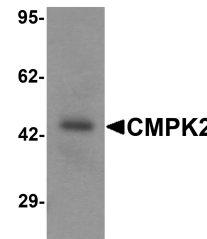
49 kDa

Uniprot ID
[Q5EBM0](#)
NCBI
[NP_997198](#)
Dilution Range

CMPK2 antibody can be used for detection of CMPK2 by Western blot at 1 µg/mL. For immunofluorescence start at 20 µg/mL. Antibody validated: Western Blot in rat samples and Immunofluorescence in human samples. All other applications and species not yet tested.



Immunofluorescence of human lung tissue ...



Western blot analysis of rat lung tissue...