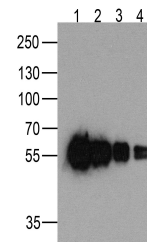


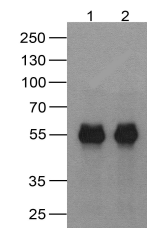
## Product Datasheet

### cMyc-tag Antibody [5G5H7] (orb1239964)

<b>Description</b>	cMyc-tag Antibody [5G5H7]
<b>Species/Host</b>	Mouse
<b>Reactivity</b>	Tag
<b>Conjugation</b>	Unconjugated
<b>Tested Applications</b>	ELISA, IP, WB
<b>Immunogen</b>	cMyc-tag antibody was raised against a synthetic peptide containing EQKLISEEDL.
<b>Preservatives</b>	cMyc-tag antibody is supplied in PBS containing 0.02% sodium azide.
<b>Form/Appearance</b>	Liquid
<b>Concentration</b>	1 mg/mL
<b>Storage</b>	cMyc-tag antibody can be stored at 4°C for three months and -20°C, stable for up to one year.
<b>Note</b>	For research use only
<b>Application notes</b>	cMyc-tag antibody can be used for detection of cMyc-tag epitope-containing recombinant proteins by Western blot at 0.5 - 1 µ/ml.
<b>Isotype</b>	IgG1
<b>Clonality</b>	Monoclonal
<b>Dilution Range</b>	cMyc-tag antibody can be used for detection of cMyc-tag epitope-containing recombinant proteins by Western blot at 0.5 - 1 µ/ml.
<b>Expiration Date</b>	12 months from date of receipt.



Western blot analysis of (1) 200ng, (2) ...



Western blot analysis of (1) 20 ng of cM...