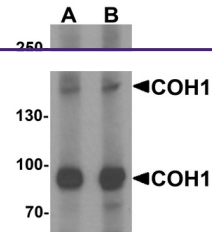
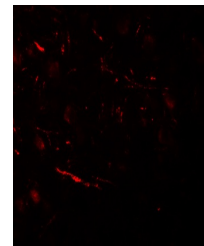

Product Datasheet

VPS13B Antibody (orb1239962)

Description	VPS13B Antibody
Species/Host	Rabbit
Reactivity	Human, Mouse, Rat
Conjugation	Unconjugated
Tested Applications	ELISA, IF, WB
Immunogen	COH1 antibody was raised against a 17 amino acid synthetic peptide near the amino terminus of human COH1. The immunogen is located within amino acids 90 - 140 of COH1.
Target	VPS13B
Preservatives	COH1 Antibody is supplied in PBS containing 0.02% sodium azide.
Form/Appearance	Liquid
Concentration	1 mg/mL
Storage	COH1 antibody can be stored at 4°C for three months and -20°C, stable for up to one year. As with all antibodies care should be taken to avoid repeated freeze thaw cycles. Antibodies should not be exposed to prolonged high temperatures.
Note	For research use only
Application notes	COH1 antibody can be used for detection of COH1 by Western blot at 1 - 2 µg/mL. For immunofluorescence start at 20 µg/mL. Antibody validated: Western Blot in human samples and Immunofluorescence in human samples. All other applications and species not yet tested.
Isotype	IgG
Clonality	Polyclonal
Uniprot ID	Q7Z7G8
NCBI	NP_056058
Dilution Range	COH1 antibody can be used for detection of COH1 by Western blot at 1 - 2 µg/mL. For immunofluorescence start at 20 µg/mL. Antibody validated: Western Blot in human samples and Immunofluorescence in human samples. All other applications and species not yet tested.
Expiration Date	12 months from date of receipt.



Western blot analysis of COH1 in SK-N-SH...



Immunofluorescence of COH1 in human brain...