
Product Datasheet

COMMD7 Antibody (orb1239961)

Description

COMMD7 Antibody

Species/Host

Rabbit

Reactivity

Human, Mouse, Rat

Conjugation

Unconjugated

Tested Applications

ELISA, IF, IHC-P, WB

Immunogen

COMMD7 antibody was raised against a 19 amino acid peptide near the center of human COMMD7. The immunogen is located within amino acids 90 - 140 of COMMD7.

Target

COMMD7

Preservatives

COMMD7 antibody is supplied in PBS containing 0.02% sodium azide.

Form/Appearance

Liquid

Concentration

1 mg/mL

Storage

COMMD7 antibody can be stored at 4°C for three months and -20°C, stable for up to one year.

Note

For research use only

Application notes

COMMD7 antibody can be used for detection of COMMD7 by Western blot at 1 - 2 µg/ml. Antibody can also be used for Immunohistochemistry starting at 5 µg/mL. For immunofluorescence start at 20 µg/mL. Antibody validated: Western Blot in mouse samples; Immunohistochemistry in human samples and Immunofluorescence in human samples. All other applications and species not yet tested.

Isotype

IgG

Clonality

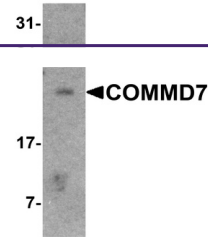
Polyclonal

MW

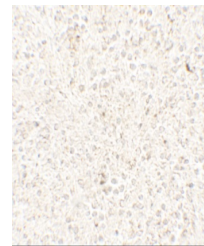
Predicted: 22 kDa Observed: 21 kDa

Uniprot ID
[Q86VX2](#)
NCBI
[NP_444269](#)
Dilution Range

COMMD7 antibody can be used for detection of COMMD7 by Western blot at 1 - 2 µg/ml. Antibody can also be used for Immunohistochemistry starting at 5 µg/mL. For immunofluorescence start at 20 µg/mL. Antibody validated: Western Blot in mouse samples; Immunohistochemistry in human samples and Immunofluorescence in human samples. All other applications and species not yet tested.

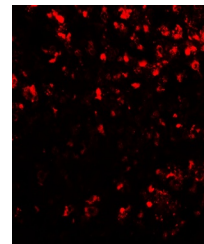


Western blot analysis of COMMD7 in mouse...



Immunohistochemistry of COMMD7 in human

...



Immunofluorescence of COMMD7 in human sp...