
Product Datasheet

CRBN Antibody (orb1239959)

Description

CRBN Antibody

Species/Host

Rabbit

Reactivity

Human, Mouse, Rat

Conjugation

Unconjugated

Tested Applications

ELISA, IF, IHC-P, WB

Immunogen

CRBN antibody was raised against a 16 amino acid peptide near the carboxy terminus of human CRBN. The immunogen is located within the last 50 amino acids of CRBN.

Target

CRBN

Preservatives

CRBN antibody is supplied in PBS containing 0.02% sodium azide.

Form/Appearance

Liquid

Concentration

1 mg/mL

Storage

CRBN antibody can be stored at 4°C up to one year. Antibodies should not be exposed to prolonged high temperatures.

Note

For research use only

Application notes

CRBN antibody can be used for detection of CRBN by Western blot at 1 - 2 µg/mL. Antibody can also be used for immunohistochemistry starting at 5 µg/mL. For immunofluorescence start at 20 µg/mL. Antibody validated: Western Blot in human samples; Immunohistochemistry in rat samples and Immunofluorescence in rat samples. All other applications and species not yet tested.

Isotype

IgG

Clonality

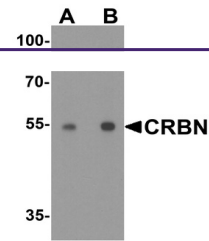
Polyclonal

MW

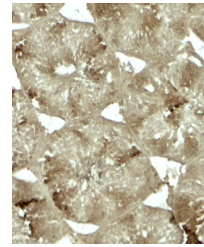
Predicted: 49 kDa Observed: 54 kDa

Uniprot ID
[Q96SW2](#)
NCBI
[NP_057386](#)
Dilution Range

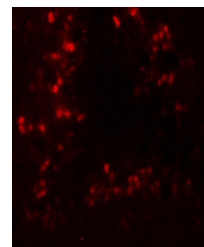
CRBN antibody can be used for detection of CRBN by Western blot at 1 - 2 µg/mL. Antibody can also be used for immunohistochemistry starting at 5 µg/mL. For immunofluorescence start at 20 µg/mL. Antibody validated: Western Blot in human samples; Immunohistochemistry in rat samples and Immunofluorescence in rat samples. All other



Western blot analysis of CRBN in human t...



Immunohistochemistry of CRBN in rat test...



Immunofluorescence of CRBN in rat testis...