

---

## Product Datasheet

### CRISP2 Antibody (orb1239956)

**Description**

CRISP2 Antibody

**Species/Host**

Rabbit

**Reactivity**

Human

**Conjugation**

Unconjugated

**Tested Applications**

ELISA, IF, IHC-P, WB

**Immunogen**

CRISP2 antibody was raised against a 15 amino acid synthetic peptide near the amino terminus of human CRISP2. The immunogen is located within the first 50 amino acids of CRISP2.

**Target**

CRISP2

**Preservatives**

CRISP2 Antibody is supplied in PBS containing 0.02% sodium azide.

**Form/Appearance**

Liquid

**Concentration**

1 mg/mL

**Storage**

CRISP2 antibody can be stored at 4°C for three months and -20°C, stable for up to one year. As with all antibodies care should be taken to avoid repeated freeze thaw cycles. Antibodies should not be exposed to prolonged high temperatures.

**Note**

For research use only

**Application notes**

CRISP2 antibody can be used for detection of CRISP2 by Western blot at 0.5 - 1 µg/mL. Antibody can also be used for immunohistochemistry starting at 10 µg/mL. For immunofluorescence start at 20 µg/mL. Antibody validated: Western Blot in human samples; Immunohistochemistry in human samples and Immunofluorescence in human samples. All other applications and species not yet tested.

**Isotype**

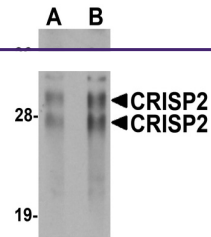
IgG

**Clonality**

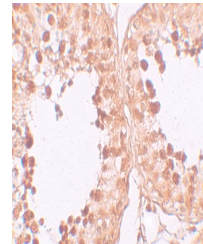
Polyclonal

**Uniprot ID**
**P16562**
**NCBI**
**NP\_001135880**
**Dilution Range**

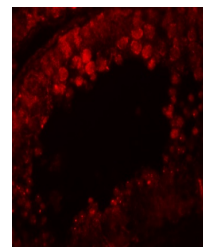
CRISP2 antibody can be used for detection of CRISP2 by Western blot at 0.5 - 1 µg/mL. Antibody can also be used for immunohistochemistry starting at 10 µg/mL. For immunofluorescence start at 20 µg/mL. Antibody validated: Western Blot in human samples; Immunohistochemistry in human samples



Western blot analysis of CRISP2 in human...



Immunohistochemistry of CRISP2 in human ...



Immunofluorescence of CRISP in human tes...