

---

## Product Datasheet

### CRMP1 Antibody (orb1239955)

**Description**

CRMP1 Antibody

**Species/Host**

Rabbit

**Reactivity**

Human, Mouse, Rat

**Conjugation**

Unconjugated

**Tested Applications**

ELISA, IF, IHC-P, WB

**Immunogen**

CRMP1 antibody was raised against a 15 amino acid synthetic peptide from near the carboxy terminus of human CRMP1. The immunogen is located within the last 50 amino acids of CRMP1.

**Target**

CRMP1

**Preservatives**

CRMP1 Antibody is supplied in PBS containing 0.02% sodium azide.

**Form/Appearance**

Liquid

**Concentration**

1 mg/mL

**Storage**

CRMP1 antibody can be stored at 4°C for three months and -20°C, stable for up to one year. As with all antibodies care should be taken to avoid repeated freeze thaw cycles. Antibodies should not be exposed to prolonged high temperatures.

**Note**

For research use only

**Application notes**

CRMP1 antibody can be used for the detection of CRMP1 by Western blot at 0.5 - 2 µg/mL. Antibody can also be used for immunohistochemistry starting at 2 µg/mL. For immunofluorescence start at 10 µg/mL. Antibody validated: Western Blot in human samples; Immunohistochemistry in human samples and Immunofluorescence in human samples. All other applications and species not yet tested.

**Isotype**

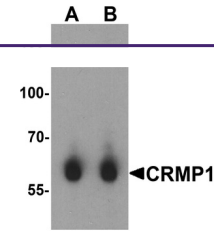
IgG

**Clonality**

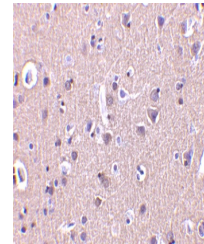
Polyclonal

**Uniprot ID**
[Q14194](#)
**NCBI**
[AAH07613](#)
**Dilution Range**

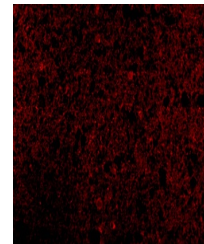
CRMP1 antibody can be used for the detection of CRMP1 by Western blot at 0.5 - 2 µg/mL. Antibody can also be used for immunohistochemistry starting at 2 µg/mL. For immunofluorescence start at 10 µg/mL. Antibody validated: Western Blot in human samples; Immunohistochemistry in human samples



Western blot analysis of CRMP1 in human ...



Immunohistochemistry of CRMP in human br...



Immunofluorescence of CRMP1 in Human Bra...