
Product Datasheet

CRMP1 Antibody (orb1239953)

Description

CRMP1 Antibody

Species/Host

Rabbit

Reactivity

Human, Mouse, Rat

Conjugation

Unconjugated

Tested Applications

ELISA, IF, IHC-P, WB

Immunogen

CRMP1 antibody was raised against a 18 amino acid synthetic peptide from near the amino terminus of human CRMP1. The immunogen is located within amino acids 90 - 140 of CRMP1.

Target

CRMP1

Preservatives

CRMP1 Antibody is supplied in PBS containing 0.02% sodium azide.

Form/Appearance

Liquid

Concentration

1 mg/mL

Storage

CRMP1 antibody can be stored at 4°C for three months and -20°C, stable for up to one year. As with all antibodies care should be taken to avoid repeated freeze thaw cycles. Antibodies should not be exposed to prolonged high temperatures.

Note

For research use only

Application notes

CRMP1 antibody can be used for the detection of CRMP1 by Western blot at 1 - 2 µg/mL. Antibody can also be used for immunohistochemistry starting at 2.5 µg/mL. For immunofluorescence start at 5 µg/mL. Antibody validated: Western Blot in rat samples; Immunohistochemistry in mouse samples and Immunofluorescence in mouse samples. All other applications and species not yet tested.

Isotype

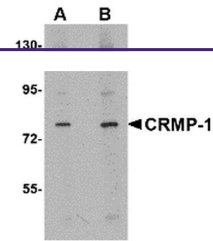
IgG

Clonality

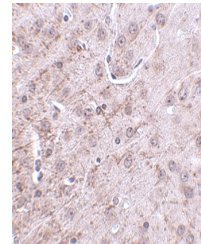
Polyclonal

Uniprot ID
[Q14194](#)
NCBI
[NP_001014809](#)
Dilution Range

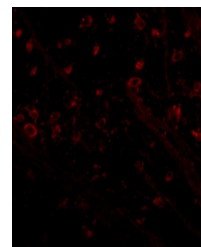
CRMP1 antibody can be used for the detection of CRMP1 by Western blot at 1 - 2 µg/mL. Antibody can also be used for immunohistochemistry starting at 2.5 µg/mL. For immunofluorescence start at 5 µg/mL. Antibody validated: Western Blot in rat samples; Immunohistochemistry in mouse samples



Western blot analysis of CRMP1 in rat br...



Immunohistochemistry of CRMP-1 in mouse ...



Immunofluorescence of CRMP1 in mouse bra...