
Product Datasheet

PTGDR2 Antibody (orb1239951)

Description

PTGDR2 Antibody

Species/Host

Rabbit

Reactivity

Human, Mouse, Rat

Conjugation

Unconjugated

Tested

ELISA, IF, IHC-P, WB

Applications
Immunogen

CRTH2 antibody was raised against a 18 amino acid synthetic peptide from near the amino terminus of human CRTH2. The immunogen is located within the first 50 amino acids of CRTH2.

Target

PTGDR2

Preservatives

CRTH2 Antibody is supplied in PBS containing 0.02% sodium azide.

Form/Appearance

Liquid

Concentration

1 mg/mL

Storage

CRTH2 antibody can be stored at 4°C for three months and -20°C, stable for up to one year. As with all antibodies care should be taken to avoid repeated freeze thaw cycles. Antibodies should not be exposed to prolonged high temperatures.

Note

For research use only

Application notes

CRTH2 antibody can be used for detection of CRTH2 by Western blot a 1 µg/mL. Antibody can also be used for immunohistochemistry starting at 2.5 µg/mL. For immunofluorescence start at 20 µg/mL. Antibody validated: Western Blot in human samples; Immunohistochemistry in human samples and Immunofluorescence in human samples. All other applications and species not yet tested.

Isotype

IgG

Clonality

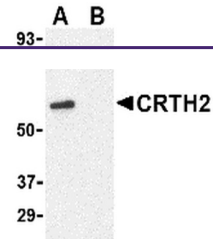
Polyclonal

MW

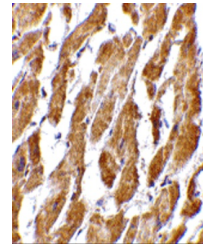
Predicted: 43, 55 kDa Observed: 60 kDa

Uniprot ID
[Q9Y5Y4](#)
NCBI
[NP_004769](#)
Dilution Range

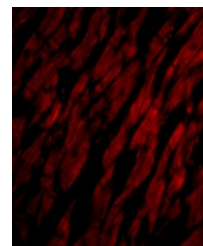
CRTH2 antibody can be used for detection of CRTH2 by Western blot a 1 µg/mL. Antibody can also be used for immunohistochemistry starting at 2.5 µg/mL. For immunofluorescence start at 20 µg/mL. Antibody validated: Western Blot in human



Western blot analysis of CRTH2 in Jurkat...



Immunohistochemistry of CRTH2 in human h...



Immunofluorescence of CRTH2 in Human Hea...