
Product Datasheet

CTHRC1 Antibody (orb1239949)

Description

CTHRC1 Antibody

Species/Host

Rabbit

Reactivity

Human, Mouse, Rat

Conjugation

Unconjugated

Tested Applications

ELISA, IF, IHC-P, WB

Immunogen

CTHRC1 antibody was raised against a 19 amino acid peptide near the amino terminus of human CTHRC1. The immunogen is located within the first 50 amino acids of CTHRC1.

Target

CTHRC1

Preservatives

CTHRC1 antibody is supplied in PBS containing 0.02% sodium azide.

Form/Appearance

Liquid

Concentration

1 mg/mL

Storage

CTHRC1 antibody can be stored at 4°C for three months and -20°C, stable for up to one year.

Note

For research use only

Application notes

CTHRC1 antibody can be used for detection of CTHRC1 by Western blot at 1 - 2 µg/mL. Antibody can also be used for immunohistochemistry starting at 5 µg/mL. For immunofluorescence start at 20 µg/mL. Antibody validated: Western Blot in rat samples; Immunohistochemistry in human samples and Immunofluorescence in human samples. All other applications and species not yet tested.

Isotype

IgG

Clonality

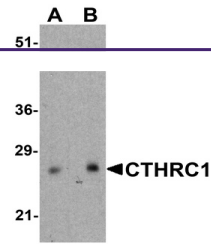
Polyclonal

MW

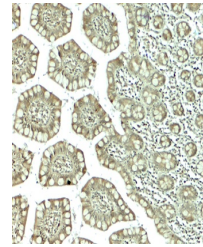
Predicted: 27 kDa Observed: 27 kDa

Uniprot ID
[Q96CG8](#)
NCBI
[NP_612464](#)
Dilution Range

CTHRC1 antibody can be used for detection of CTHRC1 by Western blot at 1 - 2 µg/mL. Antibody can also be used for immunohistochemistry starting at 5 µg/mL. For immunofluorescence start at 20 µg/mL. Antibody validated: Western Blot in rat samples; Immunohistochemistry in human samples and Immunofluorescence in human samples. All other applications and species not yet tested.

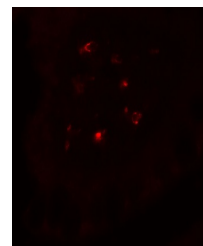


Western blot analysis of CTHRC1 in rat s...



Immunohistochemistry of CTHRC1 in human

...



Immunofluorescence of CTHRC1 in human sm...