
Product Datasheet

RPSA Antibody (orb1239946)

Description

RPSA Antibody

Species/Host

Rabbit

Reactivity

Human, Mouse

Conjugation

Unconjugated

Tested

ELISA, IF, IHC-P, WB

Applications
Immunogen

RPSA antibody was raised against a 17 amino acid peptide near the carboxy terminus of human RPSA. The immunogen is located within amino acids 190 - 240 of RPSA.

Target

RPSA

Preservatives

RPSA antibody is supplied in PBS containing 0.02% sodium azide.

Form/Appearance

Liquid

Concentration

1 mg/mL

Storage

RPSA antibody can be stored at 4°C for three months and -20°C, stable for up to one year.

Note

For research use only

Application notes

RPSA antibody can be used for detection of RPSA by Western blot at 1 - 2 µg/ml. Antibody can also be used for Immunohistochemistry starting at 5 µg/mL. For immunofluorescence start at 20 µg/mL. Antibody validated: Western Blot in human samples; Immunohistochemistry in mouse samples and Immunofluorescence in mouse samples. All other applications and species not yet tested.

Isotype

IgG

Clonality

Polyclonal

MW

Predicted: 32 kDa Observed: 32 kDa

Uniprot ID
[P08865](#)
NCBI
[NP_002286](#)
Dilution Range

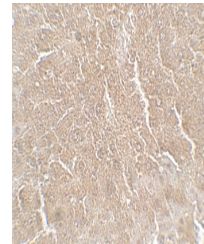
RPSA antibody can be used for detection of RPSA by Western blot at 1 - 2 µg/ml. Antibody can also be used for Immunohistochemistry starting at 5 µg/mL. For immunofluorescence start at 20 µg/mL. Antibody validated: Western Blot in human samples; Immunohistochemistry in mouse samples and Immunofluorescence in mouse samples. All other applications and species not yet tested.

36-

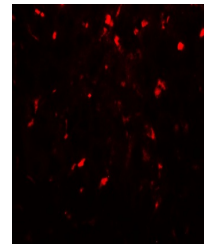
27-

19-

Western blot analysis of RPSA in Caco-2 ...



Immunohistochemistry of RPSA in mouse li...



Immunofluorescence of RPSA in mouse live...