

---

## Product Datasheet

### C1QTNF2 Antibody (orb1239944)

**Description**

C1QTNF2 Antibody

**Species/Host**

Rabbit

**Conjugation**

Unconjugated

**Tested Applications**

ELISA, ICC, IF, WB

**Immunogen**

CTRP2 antibody was raised against recombinant human CTRP2.

**Target**

C1QTNF2

**Preservatives**

CTRP2 Antibody is supplied in PBS containing 0.02% sodium azide.

**Form/Appearance**

Liquid

**Concentration**

1 mg/mL

**Storage**

CTRP2 antibody can be stored at 4°C for three months and -20°C, stable for up to one year. As with all antibodies care should be taken to avoid repeated freeze thaw cycles. Antibodies should not be exposed to prolonged high temperatures.

**Note**

For research use only

**Application notes**

CTRP2 antibody can be used for the detection of CTRP2 by Western blot at 1 µg/mL. Antibody can also be used for immunocytochemistry starting at 10 µg/mL. For immunofluorescence start at 20 µg/mL. Antibody validated: Immunocytochemistry in human samples and Immunofluorescence in human samples. All other applications and species not yet tested.

**Isotype**

IgG

**Clonality**

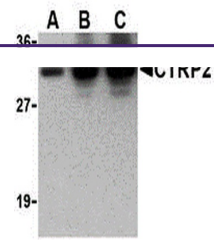
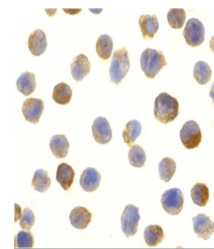
Polyclonal

**Uniprot ID**
[Q9BXJ5](#)
**NCBI**
[NP\\_114114](#)
**Dilution Range**

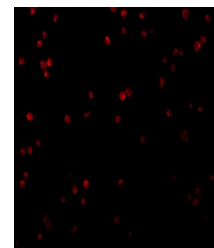
CTRP2 antibody can be used for the detection of CTRP2 by Western blot at 1 µg/mL. Antibody can also be used for immunocytochemistry starting at 10 µg/mL. For immunofluorescence start at 20 µg/mL. Antibody validated: Immunocytochemistry in human samples and Immunofluorescence in human samples. All other applications and species not yet tested.

**Expiration Date**

12 months from date of receipt.


 Western blot of recombinant CTRP2:  
(A) 5...


Immunocytochemistry of CTRP2 in Jurkat c...



Immunofluorescence of CTRP2 in Jurkat ce...