
Product Datasheet

C1QTNF2 Antibody (orb1239943)

Description

C1QTNF2 Antibody

Species/Host

Rabbit

Reactivity

Human, Mouse

Conjugation

Unconjugated

Tested

ELISA, IHC-P, WB

Applications
Immunogen

Rabbit CTRP2 polyclonal antibody was raised against a 16 amino acid synthetic peptide from near the center of human CTRP2. The immunogen is located within amino acids 140 - 190 of CTRP2.

Target

C1QTNF2

Preservatives

CTRP2 Antibody is supplied in PBS containing 0.02% sodium azide.

Form/Appearance

Liquid

Concentration

1 mg/mL

Storage

CTRP2 antibody can be stored at 4°C for three months and -20°C, stable for up to one year. As with all antibodies care should be taken to avoid repeated freeze thaw cycles. Antibodies should not be exposed to prolonged high temperatures.

Note

For research use only

Application notes

CTRP2 polyclonal antibody can be used for the detection of CTRP2 by Western blot at 1 - 4 µg/mL. Antibody can also be used for immunohistochemistry starting at 10 µg/mL. Antibody validated: Western Blot in mouse samples and Immunohistochemistry in human samples. All other applications and species not yet tested.

Isotype

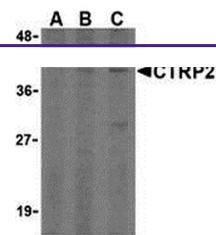
IgG

Clonality

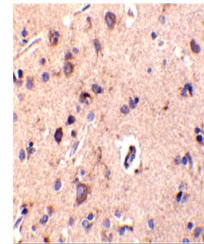
Polyclonal

Uniprot ID
[Q9BXJ5](#)
NCBI
[NP_114114](#)
Dilution Range

CTRP2 polyclonal antibody can be used for the detection of CTRP2 by Western blot at 1 - 4 µg/mL. Antibody can also be used for immunohistochemistry starting at 10 µg/mL. Antibody validated: Western Blot in mouse samples and Immunohistochemistry in human samples. All other applications and species not yet tested.



Western blot analysis of CTRP2 in 3T3 (B...



Immunohistochemical staining of human br...