

---

## Product Datasheet

### C1QTNF4 Antibody (orb1239941)

**Description**

C1QTNF4 Antibody

**Species/Host**

Rabbit

**Reactivity**

Human, Mouse, Rat

**Conjugation**

Unconjugated

**Tested Applications**

ELISA, IF, IHC-P, WB

**Immunogen**

CTRP4 antibody was raised against a 16 amino acid synthetic peptide from near the carboxy terminus of human CTRP4. The immunogen is located within amino acids 240 - 290 of CTRP4.

**Target**

C1QTNF4

**Preservatives**

CTRP4 Antibody is supplied in PBS containing 0.02% sodium azide.

**Form/Appearance**

Liquid

**Concentration**

1 mg/mL

**Storage**

CTRP4 antibody can be stored at 4°C for three months and -20°C, stable for up to one year. As with all antibodies care should be taken to avoid repeated freeze thaw cycles. Antibodies should not be exposed to prolonged high temperatures.

**Note**

For research use only

**Application notes**

CTRP4 antibody can be used for the detection of CTRP4 by Western blot at 1 - 4 µg/mL. Antibody can also be used for immunohistochemistry starting at 10 µg/mL. For immunofluorescence start at 20 µg/mL. Antibody validated: Western Blot in rat samples; Immunohistochemistry in rat samples and Immunofluorescence in rat samples. All other applications and species not yet tested.

**Isotype**

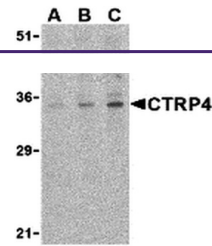
IgG

**Clonality**

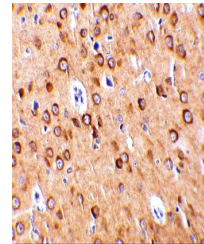
Polyclonal

**Uniprot ID**
[Q9BXJ3](#)
**NCBI**
[AAH35628](#)
**Dilution Range**

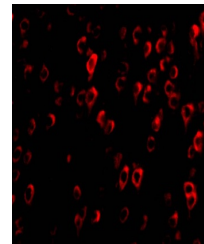
CTRP4 antibody can be used for the detection of CTRP4 by Western blot at 1 - 4 µg/mL. Antibody can also be used for immunohistochemistry starting at 10 µg/mL. For immunofluorescence start at 20 µg/mL. Antibody validated: Western Blot in rat samples; Immunohistochemistry in rat samples and



Western blot analysis of CTRP4 in rat br...



Immunohistochemistry of CTRP4 in rat bra...



Immunofluorescence of CTRP4 in Rat Brain...