

---

## Product Datasheet

### C1QTNF5 Antibody (orb1239939)

**Description**

C1QTNF5 Antibody

**Species/Host**

Rabbit

**Reactivity**

Human, Rat

**Conjugation**

Unconjugated

**Tested Applications**

ELISA, IHC-P, WB

**Immunogen**

CTRP5 antibody was raised against a 15 amino acid synthetic peptide from near the amino terminus of human CTRP5. The immunogen is located within amino acids 30 - 80 of CTRP5.

**Target**

C1QTNF5

**Preservatives**

CTRP5 Antibody is supplied in PBS containing 0.02% sodium azide.

**Form/Appearance**

Liquid

**Concentration**

1 mg/mL

**Storage**

CTRP5 antibody can be stored at 4°C for three months and -20°C, stable for up to one year. As with all antibodies care should be taken to avoid repeated freeze thaw cycles. Antibodies should not be exposed to prolonged high temperatures.

**Note**

For research use only

**Application notes**

CTRP5 antibody can be used for the detection of CTRP5 by Western blot at 1 - 4 µg/mL. Antibody can also be used for immunohistochemistry starting at 10 µg/mL. Antibody validated: Western Blot in human samples and Immunohistochemistry in human samples. All other applications and species not yet tested.

**Isotype**

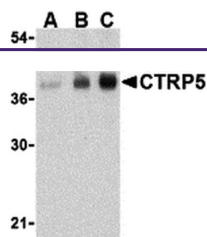
IgG

**Clonality**

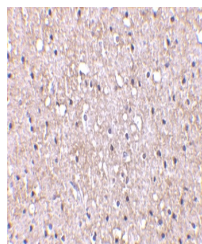
Polyclonal

**Uniprot ID**
[Q9BXJ0](#)
**NCBI**
[AAQ88749](#)
**Dilution Range**

CTRP5 antibody can be used for the detection of CTRP5 by Western blot at 1 - 4 µg/mL. Antibody can also be used for immunohistochemistry starting at 10 µg/mL. Antibody validated: Western Blot in human samples and Immunohistochemistry in human samples. All other applications and species not yet tested.



Western blot analysis of CTRP5 in human ...



Immunohistochemistry of CTRP5 in human b...