

---

## Product Datasheet

### C1QTNF6 Antibody (orb1239938)

**Description**

C1QTNF6 Antibody

**Species/Host**

Rabbit

**Reactivity**

Human, Mouse

**Conjugation**

Unconjugated

**Tested Applications**

ELISA, ICC, IF, WB

**Immunogen**

CTRP6 antibody was raised against a 15 amino acid synthetic peptide from near the carboxy terminus of human CTRP6. The immunogen is located within the last 50 amino acids of CTRP6.

**Target**

C1QTNF6

**Preservatives**

CTRP6 Antibody is supplied in PBS containing 0.02% sodium azide.

**Form/Appearance**

Liquid

**Concentration**

1 mg/mL

**Storage**

CTRP6 antibody can be stored at 4°C for three months and -20°C, stable for up to one year. As with all antibodies care should be taken to avoid repeated freeze thaw cycles. Antibodies should not be exposed to prolonged high temperatures.

**Note**

For research use only

**Application notes**

CTRP6 antibody can be used for the detection of CTRP6 by Western blot at 1 and 2 µg/mL. Antibody can also be used for immunocytochemistry starting at 10 µg/mL. For immunofluorescence start at 20 µg/mL. Antibody validated: Western Blot in human samples; Immunocytochemistry in human samples and Immunofluorescence in human samples. All other applications and species not yet tested.

**Isotype**

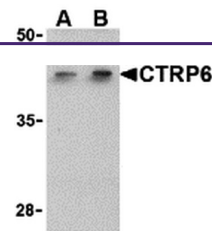
IgG

**Clonality**

Polyclonal

**Uniprot ID**
[Q9BXI9](#)
**NCBI**
[AAQ88740](#)
**Dilution Range**

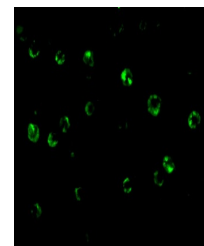
CTRP6 antibody can be used for the detection of CTRP6 by Western blot at 1 and 2 µg/mL. Antibody can also be used for immunocytochemistry starting at 10 µg/mL. For immunofluorescence start at 20 µg/mL. Antibody validated: Western Blot in human samples; Immunocytochemistry in human samples



Western blot analysis of CTRP6 in HeLa c...



Immunocytochemistry of CTRP6 in HeLa cel...



Immunofluorescence of CTRP6 in HeLa cell...