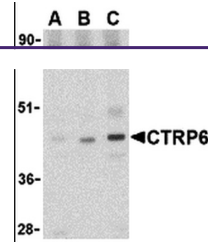
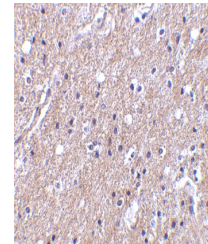

Product Datasheet

C1QTNF6 Antibody (orb1239937)

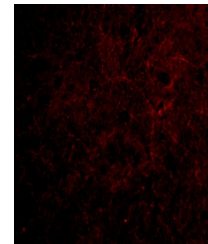
Description	C1QTNF6 Antibody
Species/Host	Rabbit
Reactivity	Human, Mouse, Rat
Conjugation	Unconjugated
Tested Applications	ELISA, IF, IHC-P, WB
Immunogen	CTRP6 antibody was raised against a 15 amino acid synthetic peptide from near the center of human CTRP6. The immunogen is located within amino acids 80 - 130 of CTRP6.
Target	C1QTNF6
Preservatives	CTRP6 Antibody is supplied in PBS containing 0.02% sodium azide.
Form/Appearance	Liquid
Concentration	1 mg/mL
Storage	CTRP6 antibody can be stored at 4°C for three months and -20°C, stable for up to one year. As with all antibodies care should be taken to avoid repeated freeze thaw cycles. Antibodies should not be exposed to prolonged high temperatures.
Note	For research use only
Application notes	CTRP6 antibody can be used for the detection of CTRP6 by Western blot at 0.5 - 2 µg/mL. Antibody can also be used for immunohistochemistry starting at 10 µg/mL. For immunofluorescence start at 20 µg/mL. Antibody validated: Western Blot in mouse samples; Immunohistochemistry in human samples and Immunofluorescence in human samples. All other applications and species not yet tested.
Isotype	IgG
Clonality	Polyclonal
Uniprot ID	Q9BX19
NCBI	AAQ88740
Dilution Range	CTRP6 antibody can be used for the detection of CTRP6 by Western blot at 0.5 - 2 µg/mL. Antibody can also be used for immunohistochemistry starting at 10 µg/mL. For immunofluorescence start at 20 µg/mL. Antibody validated: Western Blot in mouse samples; Immunohistochemistry in human samples



Western blot analysis of CTRP6 in mouse ...



Immunohistochemistry of CTRP6 in human b...



Immunofluorescence of CTRP6 in Human Bra...