

---

## Product Datasheet

### C1qtnf7 Antibody (orb1239936)

**Description**

C1qtnf7 Antibody

**Species/Host**

Rabbit

**Reactivity**

Human, Mouse, Rat

**Conjugation**

Unconjugated

**Tested**

ELISA, ICC, IF, WB

**Applications**
**Immunogen**

CTRP7 antibody was raised against a 15 amino acid synthetic peptide from near the carboxy terminus of human CTRP7. The immunogen is located within the last 50 amino acids of CTRP7.

**Target**

C1qtnf7

**Preservatives**

CTRP7 Antibody is supplied in PBS containing 0.02% sodium azide.

**Form/Appearance**

Liquid

**Concentration**

1 mg/mL

**Storage**

CTRP7 antibody can be stored at 4°C for three months and -20°C, stable for up to one year. As with all antibodies care should be taken to avoid repeated freeze thaw cycles. Antibodies should not be exposed to prolonged high temperatures.

**Note**

For research use only

**Application notes**

antibody can be used for the detection of CTRP7 by Western blot at 0.5 to 2 µg/mL. Antibody can also be used for immunocytochemistry starting at 0.5 µg/mL. For immunofluorescence start at 2 µg/mL. Antibody validated: Western Blot in human samples; Immunocytochemistry in human samples and Immunofluorescence in human samples. All other applications and species not yet tested.

**Isotype**

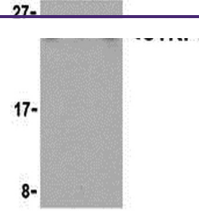
IgG

**Clonality**

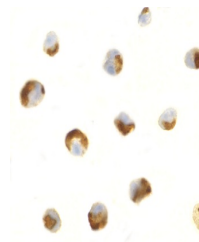
Polyclonal

**Uniprot ID**
[Q8BVD7](#)
**NCBI**
[AAV21932](#)
**Dilution Range**

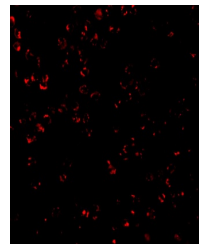
antibody can be used for the detection of CTRP7 by Western blot at 0.5 to 2 µg/mL. Antibody can also be used for immunocytochemistry starting at 0.5 µg/mL. For immunofluorescence start at 2 µg/mL. Antibody validated: Western Blot in human samples; Immunocytochemistry in human samples

**A B C**


Western blot analysis of CTRP7 in 293 ce...



Immunocytochemistry of CTRP7 in HL60 cel...



Immunofluorescence of CTRP7 in HL60 with...