
Product Datasheet

C1qtnf7 Antibody (orb1239934)

Description

C1qtnf7 Antibody

Species/Host

Rabbit

Reactivity

Human, Mouse, Rat

Conjugation

Unconjugated

Tested Applications

ELISA, IHC-P, WB

Immunogen

CTRP7 antibody was raised against a 15 amino acid synthetic peptide from near the amino terminus of human CTRP7. The immunogen is located within the first 50 amino acids of CTRP7.

Target

C1qtnf7

Preservatives

CTRP7 Antibody is supplied in PBS containing 0.02% sodium azide.

Form/Appearance

Liquid

Concentration

1 mg/mL

Storage

CTRP7 antibody can be stored at 4°C for three months and -20°C, stable for up to one year. As with all antibodies care should be taken to avoid repeated freeze thaw cycles. Antibodies should not be exposed to prolonged high temperatures.

Note

For research use only

Application notes

CTRP7 antibody can be used for the detection of CTRP7 by Western blot at 1 - 4 µg/mL. Antibody can also be used for immunocytochemistry starting at 10 µg/mL. Antibody validated: Western Blot in mouse samples and Immunohistochemistry in rat samples. All other applications and species not yet tested.

Isotype

IgG

Clonality

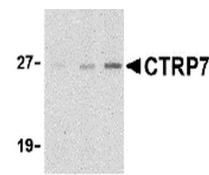
Polyclonal

Uniprot ID
[Q8BVD7](#)
NCBI
[AAI21932](#)
Dilution Range

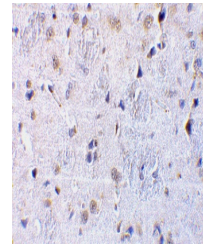
CTRP7 antibody can be used for the detection of CTRP7 by Western blot at 1 - 4 µg/mL. Antibody can also be used for immunocytochemistry starting at 10 µg/mL. Antibody validated: Western Blot in mouse samples and Immunohistochemistry in rat samples. All other applications and species not yet tested.

Expiration Date

12 months from date of receipt.

A B C


Western blot analysis of CTRP7 in 3T3 ce...



Immunohistochemical staining of rat brai...