

---

## Product Datasheet

### CUEDC1 Antibody (orb1239932)

**Description**

CUEDC1 Antibody

**Species/Host**

Rabbit

**Reactivity**

Human, Mouse, Rat

**Conjugation**

Unconjugated

**Tested Applications**

ELISA, IF, IHC-P, WB

**Immunogen**

CUEDC1 antibody was raised against a 16 amino acid synthetic peptide near the carboxy terminus of human CUEDC1. The immunogen is located within amino acids 310 - 360 of CUEDC1.

**Target**

CUEDC1

**Preservatives**

CUEDC1 Antibody is supplied in PBS containing 0.02% sodium azide.

**Form/Appearance**

Liquid

**Concentration**

1 mg/mL

**Storage**

CUEDC1 antibody can be stored at 4°C for three months and -20°C, stable for up to one year. As with all antibodies care should be taken to avoid repeated freeze thaw cycles. Antibodies should not be exposed to prolonged high temperatures.

**Note**

For research use only

**Application notes**

CUEDC1 antibody can be used for detection of CUEDC1 by Western blot at 0.5 - 1 µg/mL. Antibody can also be used for immunohistochemistry starting at 2 µg/mL. For immunofluorescence start at 20 µg/mL. Antibody validated: Western Blot in rat samples; Immunohistochemistry in human samples and Immunofluorescence in human samples. All other applications and species not yet tested.

**Isotype**

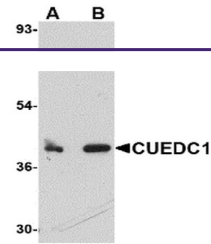
IgG

**Clonality**

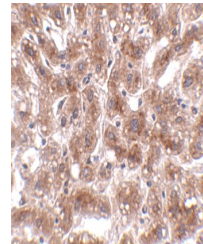
Polyclonal

**Uniprot ID**
[Q9NWM3](#)
**NCBI**
[AAH56882](#)
**Dilution Range**

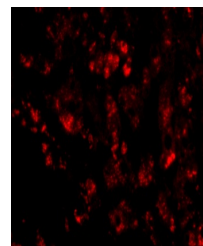
CUEDC1 antibody can be used for detection of CUEDC1 by Western blot at 0.5 - 1 µg/mL. Antibody can also be used for immunohistochemistry starting at 2 µg/mL. For immunofluorescence start at 20 µg/mL. Antibody validated: Western Blot in rat samples; Immunohistochemistry in human samples



Western blot analysis of CUEDC1 in rat liver tissue.



Immunohistochemistry of CUEDC1 in human liver tissue.



Immunofluorescence of CUEDC1 in human liver tissue.