

---

## Product Datasheet

### CUEDC2 Antibody (orb1239931)

**Description**

CUEDC2 Antibody

**Species/Host**

Rabbit

**Reactivity**

Human, Mouse, Rat

**Conjugation**

Unconjugated

**Tested**

ELISA, ICC, WB

**Applications**
**Immunogen**

CUEDC2 antibody was raised against a 19 amino acid synthetic peptide from near the carboxy terminus of human CUEDC2. The immunogen is located within the last 50 amino acids of CUEDC2.

**Target**

CUEDC2

**Preservatives**

CUEDC2 Antibody is supplied in PBS containing 0.02% sodium azide.

**Form/Appearance**

Liquid

**Concentration**

1 mg/mL

**Storage**

CUEDC2 antibody can be stored at 4°C for three months and -20°C, stable for up to one year. As with all antibodies care should be taken to avoid repeated freeze thaw cycles. Antibodies should not be exposed to prolonged high temperatures.

**Note**

For research use only

**Application notes**

CUEDC2 antibody can be used for detection of CUEDC2 by Western blot at 1 - 2 µg/mL. Antibody can also be used for immunocytochemistry starting at 5 µg/mL. Antibody validated: Western Blot in human samples and Immunocytochemistry in human samples. All other applications and species not yet tested.

**Isotype**

IgG

**Clonality**

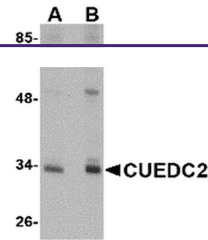
Polyclonal

**MW**

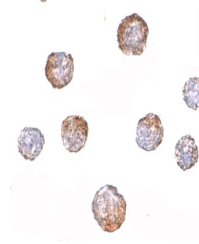
Predicted: 32 kDa Observed: 34 kDa

**Uniprot ID**
[Q9H467](#)
**NCBI**
[NP\\_076945](#)
**Dilution Range**

CUEDC2 antibody can be used for detection of CUEDC2 by Western blot at 1 - 2 µg/mL. Antibody can also be used for immunocytochemistry starting at 5 µg/mL. Antibody validated: Western Blot in human samples and Immunocytochemistry in human samples. All other applications and species not yet tested.



Western blot analysis of CUEDC2 in HeLa ...



Immunocytochemistry of CUEDC2 in HeLa ce...