

---

## Product Datasheet

### CX3CR1 Antibody (orb1239930)

**Description**

CX3CR1 Antibody

**Species/Host**

Rabbit

**Reactivity**

Human

**Conjugation**

Unconjugated

**Tested**

ELISA, IF, IHC-P, WB

**Applications**
**Immunogen**

CX3CR1 antibody was raised against a peptide corresponding to amino acids in a extracellular loop of human CX3CR1. The immunogen is located within amino acids 160 - 210 of CX3CR1.

**Target**

CX3CR1

**Preservatives**

CX3CR1 Antibody is supplied in PBS containing 0.02% sodium azide.

**Form/Appearance**

Liquid

**Concentration**

1 mg/mL

**Storage**

CX3CR1 antibody can be stored at 4°C up to one year. Antibodies should not be exposed to prolonged high temperatures.

**Note**

For research use only

**Application notes**

CX3CR1 antibody can be used for detection of CX3CR1 by Western blot at 0.5 µg/mL. Antibody can also be used for immunohistochemistry starting at 10 µg/mL. For immunofluorescence start at 20 µg/mL. Antibody validated: Western Blot in human samples; Immunohistochemistry in human samples and Immunofluorescence in human samples. All other applications and species not yet tested.

**Isotype**

IgG

**Clonality**

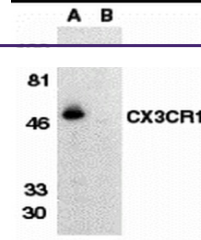
Polyclonal

**MW**

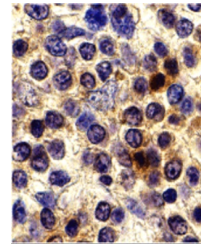
Predicted: 39, 43 kDa Observed: 50 kDa

**Uniprot ID**
[P49238](#)
**NCBI**
[NP\\_001328](#)
**Dilution Range**

CX3CR1 antibody can be used for detection of CX3CR1 by Western blot at 0.5 µg/mL. Antibody can also be used for immunohistochemistry starting at 10 µg/mL. For immunofluorescence start at 20 µg/mL. Antibody validated: Western Blot in human samples; Immunohistochemistry in human samples and Immunofluorescence in human samples. All other applications and species not yet tested.

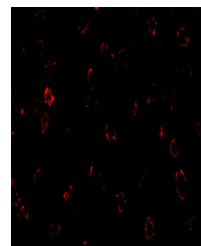


Western blot analysis of CX3CR1 in THP-1...



Immunohistochemistry of CX3CR1 in human

...



Immunofluorescence of CX3CR1 in THP-1 ce...