
Product Datasheet

CXCR3 Antibody (orb1239927)

Description

CXCR3 Antibody

Species/Host

Rabbit

Reactivity

Human, Mouse, Rat

Conjugation

Unconjugated

Tested Applications

ELISA, ICC, IF, WB

Immunogen

CXCR3 antibody was raised against a 19 amino acid peptide near the carboxy terminus of human CXCR3 .The immunogen is located within the last 50 amino acids of CXCR3.

Target

CXCR3

Preservatives

CXCR3 antibody is supplied in PBS containing 0.02% sodium azide.

Form/Appearance

Liquid

Concentration

1 mg/mL

Storage

CXCR3 antibody can be stored at 4°C for three months and -20°C, stable for up to one year.

Note

For research use only

Application notes

CXCR3 antibody can be used for detection of CXCR3 by Western blot at 1 - 2 µg/ml. Antibody can also be used for Immunocytochemistry at 5 µg/mL. For Immunofluorescence start at 20 µg/mL. Antibody validated: Western Blot in human samples; Immunocytochemistry in human samples and Immunofluorescence in human samples. All other applications and species not yet tested.

Isotype

IgG

Clonality

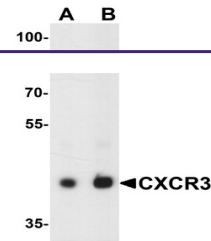
Polyclonal

MW

Predicted: 46 kDa Observed: 43 kDa

Uniprot ID
[P49682](#)
NCBI
[NP_001136269](#)
Dilution Range

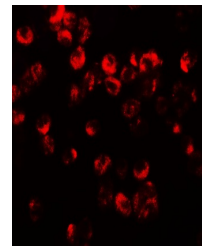
CXCR3 antibody can be used for detection of CXCR3 by Western blot at 1 - 2 µg/ml. Antibody can also be used for Immunocytochemistry at 5 µg/mL. For Immunofluorescence start at 20 µg/mL. Antibody validated: Western Blot in human samples; Immunocytochemistry in human samples and Immunofluorescence in human samples. All other applications and species not yet tested.



Western blot analysis of CXCR3 in HepG2 ...



Immunocytochemistry of CXCR3 in HepG2 ce...



Immunofluorescence of CXCR3 in HepG2 cel...