

Product Datasheet

REEP3 Antibody (orb1239925)

Description

REEP3 Antibody

Species/Host

Rabbit

Reactivity

Human, Mouse, Rat

Conjugation

Unconjugated

Tested Applications

ELISA, ICC, IF, IHC-P, WB

Immunogen

REEP3 antibody was raised against a 17 amino acid synthetic peptide near the carboxy terminus of human REEP3. The immunogen is located within the last 50 amino acids of REEP3.

Target

REEP3

Preservatives

REEP3 Antibody is supplied in PBS containing 0.02% sodium azide.

Form/Appearance

Liquid

Concentration

1 mg/mL

Storage

REEP3 antibody can be stored at 4°C for three months and -20°C, stable for up to one year. As with all antibodies care should be taken to avoid repeated freeze thaw cycles. Antibodies should not be exposed to prolonged high temperatures.

Note

For research use only

Application notes

REEP3 antibody can be used for detection of REEP3 by Western blot at 1 µg/mL. Antibody can also be used for immunohistochemistry starting at 5 µg/mL. For immunofluorescence start at 20 µg/mL. Antibody validated: Western Blot in rat samples; Immunohistochemistry in mouse samples; Immunocytochemistry in human samples and Immunofluorescence in human and mouse samples. All other applications and species not yet tested.

Isotype

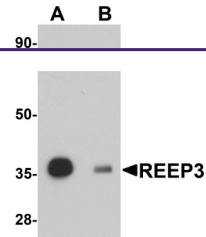
IgG

Clonality

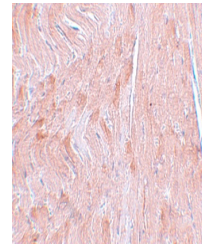
Polyclonal

Uniprot ID
Q6NUK4
NCBI
NP_001001330
Dilution Range

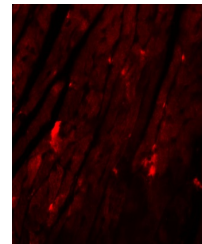
REEP3 antibody can be used for detection of REEP3 by Western blot at 1 µg/mL. Antibody can also be used for immunohistochemistry starting at 5 µg/mL. For immunofluorescence start at 20 µg/mL. Antibody validated: Western Blot in rat samples;



Western blot analysis of REEP3 in rat he...



Immunohistochemistry of REEP3 in mouse h...



Immunofluorescence of REEP3 in mouse hea...