
Product Datasheet

CXCR4 Antibody (orb1239924)

Description

CXCR4 Antibody

Species/Host

Rabbit

Conjugation

Unconjugated

Tested Applications

ELISA, ICC, IF, WB

Immunogen

CXCR4-Lo antibody was raised against a peptide corresponding to nine amino acids near the amino terminus of human CXCR4 isoform a. The immunogen is located within the first 50 amino acids of CXCR4-Lo.

Target

CXCR4

Preservatives

CXCR4-Lo Antibody is supplied in PBS containing 0.02% sodium azide.

Form/Appearance

Liquid

Concentration

1 mg/mL

Storage

CXCR4-Lo antibody can be stored at 4°C for three months and -20°C, stable for up to one year. As with all antibodies care should be taken to avoid repeated freeze thaw cycles. Antibodies should not be exposed to prolonged high temperatures.

Note

For research use only

Application notes

CXCR4-Lo antibody can be used for Western blot at 10 µg/mL. Antibody can also be used for immunocytochemistry starting at 2 µg/mL. For immunofluorescence start at 4 µg/mL. Antibody validated: Western Blot in human samples; Immunohistochemistry in human samples and Immunofluorescence in human samples. All other applications and species not yet tested.

Isotype

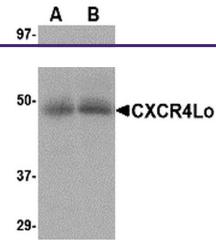
IgG

Clonality

Polyclonal

Uniprot ID
P61073
NCBI
NP_001008540
Dilution Range

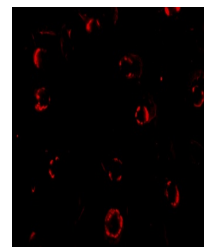
CXCR4-Lo antibody can be used for Western blot at 10 µg/mL. Antibody can also be used for immunocytochemistry starting at 2 µg/mL. For immunofluorescence start at 4 µg/mL. Antibody validated: Western Blot in human samples; Immunohistochemistry in human samples and Immunofluorescence in human samples. All other



Western blot analysis of CXCR4 in (A) hu...



Immunohistochemistry of CXCR4Lo in HeLa ...



Immunofluorescence of CXCR4-Lo in HeLa C...