
Product Datasheet

CXXC4 Antibody (orb1239923)

Description

CXXC4 Antibody

Species/Host

Rabbit

Reactivity

Human, Mouse, Rat

Conjugation

Unconjugated

Tested

ELISA, IF, IHC-P, WB

Applications
Immunogen

CXXC4 antibody was raised against an 18 amino acid synthetic peptide near the amino terminus of human CXXC4. The immunogen is located within amino acids 50 - 100 of CXXC4.

Target

CXXC4

Preservatives

CXXC4 Antibody is supplied in PBS containing 0.02% sodium azide.

Form/Appearance

Liquid

Concentration

1 mg/mL

Storage

CXXC4 antibody can be stored at 4°C for three months and -20°C, stable for up to one year. As with all antibodies care should be taken to avoid repeated freeze thaw cycles. Antibodies should not be exposed to prolonged high temperatures.

Note

For research use only

Application notes

CXXC4 antibody can be used for detection of CXXC4 by Western blot at 1 µg/mL. Antibody can also be used for immunohistochemistry starting at 10 µg/mL. For immunofluorescence start at 20 µg/mL. Antibody validated: Western Blot in human samples; Immunohistochemistry in human samples and Immunofluorescence in human samples. All other applications and species not yet tested.

Isotype

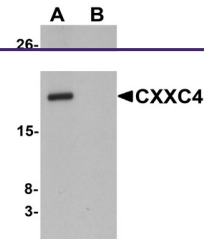
IgG

Clonality

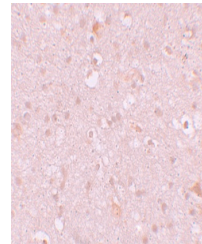
Polyclonal

Uniprot ID
[Q9H2H0](#)
NCBI
[NP_079488](#)
Dilution Range

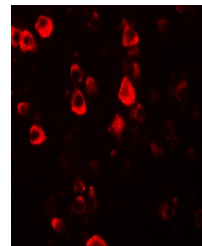
CXXC4 antibody can be used for detection of CXXC4 by Western blot at 1 µg/mL. Antibody can also be used for immunohistochemistry starting at 10 µg/mL. For immunofluorescence start at 20 µg/mL. Antibody validated: Western Blot in human samples; Immunohistochemistry in human samples and



Western blot analysis of CXXC4 in human ...



Immunohistochemistry of CXXC4 in human b...



Immunofluorescence of CXXC4 in human bra...