
Product Datasheet

DAD1 Antibody (orb1239920)

Description

DAD1 Antibody

Species/Host

Rabbit

Reactivity

Human, Mouse

Conjugation

Unconjugated

Tested Applications

ELISA, ICC, IF, WB

Immunogen

DAD1 antibody was raised against a peptide corresponding to 14 amino acids near the C-terminus of human DAD1. The immunogen is located within the last 50 amino acids of DAD1.

Target

DAD1

Preservatives

DAD1 Antibody is supplied in PBS containing 0.02% sodium azide.

Form/Appearance

Liquid

Concentration

1 mg/mL

Storage

DAD1 antibody can be stored at 4°C for three months and -20°C, stable for up to one year. As with all antibodies care should be taken to avoid repeated freeze thaw cycles. Antibodies should not be exposed to prolonged high temperatures.

Note

For research use only

Application notes

DAD1 antibody can be used for detection of DAD1 by Western blot at 0.5 to 2 µg/mL. Despite its predicted molecular weight, DAD1 migrates at ~22 kDa in SDS-PAGE. Antibody can also be used for immunocytochemistry starting at 10 µg/mL. For immunofluorescence start at 10 µg/mL. Antibody validated: Western Blot in human samples; Immunocytochemistry in human samples and Immunofluorescence in human samples. All other applications and species not yet tested.

Isotype

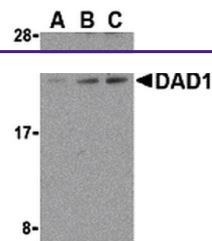
IgG

Clonality

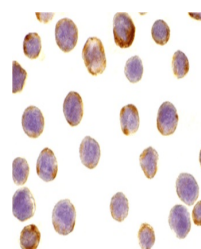
Polyclonal

Uniprot ID
P61803
NCBI
AAH09798
Dilution Range

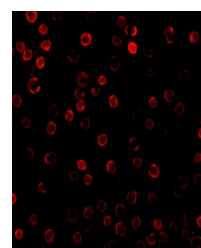
DAD1 antibody can be used for detection of DAD1 by Western blot at 0.5 to 2 µg/mL. Despite its predicted molecular weight, DAD1 migrates at ~22 kDa in SDS-PAGE. Antibody can also be used for



Western blot analysis of DAD1 in HepG2 c...



Immunocytochemistry of DAD1 in HepG2 cel...



Immunofluorescence of DAD1 in HepG2 cell...