
Product Datasheet

DARC Antibody (orb1239916)

Description

DARC Antibody

Species/Host

Rabbit

Reactivity

Human, Mouse, Rat

Conjugation

Unconjugated

Tested Applications

ELISA, IHC-P, WB

Immunogen

DARC antibody was raised against a 16 amino acid synthetic peptide from near the carboxy terminus of human DARC. The immunogen is located within the last 50 amino acids of DARC.

Target

DARC

Preservatives

DARC Antibody is supplied in PBS containing 0.02% sodium azide.

Form/Appearance

Liquid

Concentration

1 mg/mL

Storage

DARC antibody can be stored at 4°C for three months and -20°C, stable for up to one year. As with all antibodies care should be taken to avoid repeated freeze thaw cycles. Antibodies should not be exposed to prolonged high temperatures.

Note

For research use only

Application notes

DARC antibody can be used for detection of DARC by Western blot at 0.5 - 2 µg/mL. Antibody can also be used for immunohistochemistry starting at 2.5 µg/mL. Antibody validated: Western Blot in human samples and Immunohistochemistry in mouse samples. All other applications and species not yet tested.

Isotype

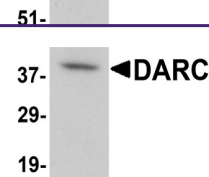
IgG

Clonality

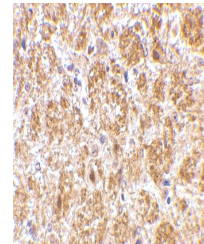
Polyclonal

Uniprot ID
[Q16570](#)
NCBI
[Q16570](#)
Dilution Range

DARC antibody can be used for detection of DARC by Western blot at 0.5 - 2 µg/mL. Antibody can also be used for immunohistochemistry starting at 2.5 µg/mL. Antibody validated: Western Blot in human samples and Immunohistochemistry in mouse samples. All other applications and species not yet tested.



Western blot analysis of DARC in human c...



Immunohistochemistry of DARC in mouse br...