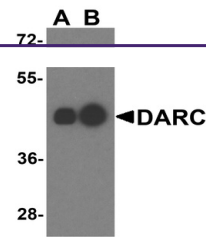


---

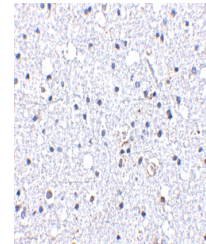
## Product Datasheet

### DARC Antibody (orb1239915)

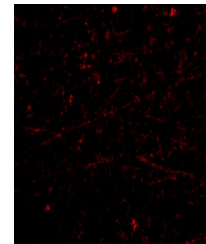
<b>Description</b>	DARC Antibody
<b>Species/Host</b>	Rabbit
<b>Reactivity</b>	Human
<b>Conjugation</b>	Unconjugated
<b>Tested Applications</b>	ELISA, IF, IHC-P, WB
<b>Immunogen</b>	DARC antibody was raised against a 18 amino acid synthetic peptide from near the amino terminus of human DARC.The immunogen is located within the first 50 amino acids of DARC.
<b>Target</b>	DARC
<b>Preservatives</b>	DARC Antibody is supplied in PBS containing 0.02% sodium azide.
<b>Form/Appearance</b>	Liquid
<b>Concentration</b>	1 mg/mL
<b>Storage</b>	DARC antibody can be stored at 4°C for three months and -20°C, stable for up to one year. As with all antibodies care should be taken to avoid repeated freeze thaw cycles. Antibodies should not be exposed to prolonged high temperatures.
<b>Note</b>	For research use only
<b>Application notes</b>	DARC antibody can be used for detection of DARC by Western blot at 0.5 - 2 µg/mL. Antibody can also be used for immunohistochemistry starting at 5 µg/mL. For immunofluorescence start at 20 µg/mL.Antibody validated: Western Blot in human samples; Immunohistochemistry in human samples and Immunofluorescence in human samples. All other applications and species not yet tested.
<b>Isotype</b>	IgG
<b>Clonality</b>	Polyclonal
<b>Uniprot ID</b>	<a href="#">Q16570</a>
<b>NCBI</b>	<a href="#">Q16570</a>
<b>Dilution Range</b>	DARC antibody can be used for detection of DARC by Western blot at 0.5 - 2 µg/mL. Antibody can also be used for immunohistochemistry starting at 5 µg/mL. For immunofluorescence start at 20 µg/mL.Antibody validated: Western Blot in human samples; Immunohistochemistry in human samples and



Western blot analysis of DARC in human I...



Immunohistochemistry of DARC in human br...



Immunofluorescence of DARC in Human Brai...