
Product Datasheet

DCLK2 Antibody (orb1239910)

Description

DCLK2 Antibody

Species/Host

Rabbit

Reactivity

Human, Mouse, Rat

Conjugation

Unconjugated

Tested Applications

ELISA, IHC-P, WB

Applications
Immunogen

DCLK2 antibody was raised against a 14 amino acid synthetic peptide near the carboxy terminus of human DCLK2. The immunogen is located within the last 50 amino acids of DCLK2.

Target

DCLK2

Preservatives

DCLK2 Antibody is supplied in PBS containing 0.02% sodium azide.

Form/Appearance

Liquid

Concentration

1 mg/mL

Storage

DCLK2 antibody can be stored at 4°C for three months and -20°C, stable for up to one year. As with all antibodies care should be taken to avoid repeated freeze thaw cycles. Antibodies should not be exposed to prolonged high temperatures.

Note

For research use only

Application notes

DCLK2 antibody can be used for detection of DCLK2 by Western blot at 1 - 2 µg/mL. Antibody can also be used for immunohistochemistry starting at 5 µg/mL. Antibody validated: Western Blot in rat samples and Immunohistochemistry in rat samples. All other applications and species not yet tested.

Isotype

IgG

Clonality

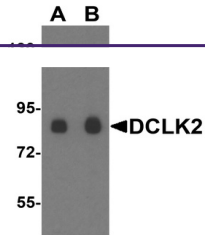
Polyclonal

MW

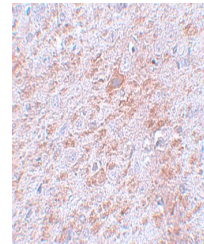
Predicted: 85 kDa Observed: 85 kDa

Uniprot ID
[Q8N568](#)
NCBI
[NP_001035350](#)
Dilution Range

DCLK2 antibody can be used for detection of DCLK2 by Western blot at 1 - 2 µg/mL. Antibody can also be used for immunohistochemistry starting at 5 µg/mL. Antibody validated: Western Blot in rat samples and Immunohistochemistry in rat samples. All other applications and species not yet tested.



Western blot analysis of DCLK2 in rat br...



Immunohistochemistry of DLCK2 in rat bra...