

---

## Product Datasheet

### PRDM16 Antibody (orb1239909)

**Description**

PRDM16 Antibody

**Species/Host**

Rabbit

**Reactivity**

Human, Mouse

**Conjugation**

Unconjugated

**Tested Applications**

ELISA, IF, IHC-P, WB

**Immunogen**

PRDM16 antibody was raised against a 17 amino acid synthetic peptide from near the carboxy terminus of human PRDM16. The immunogen is located within amino acids 1120 - 1170 of PRDM16.

**Target**

PRDM16

**Preservatives**

PRDM16 Antibody is supplied in PBS containing 0.02% sodium azide.

**Form/Appearance**

Liquid

**Concentration**

1 mg/mL

**Storage**

PRDM16 antibody can be stored at 4°C up to one year. Antibodies should not be exposed to prolonged high temperatures.

**Note**

For research use only

**Application notes**

PRDM16 antibody can be used for detection of PRDM16 by Western blot at 1 µg/mL. Antibody can also be used for immunohistochemistry starting at 2 µg/mL. For immunofluorescence start at 20 µg/mL. Antibody validated: Western Blot in human samples; Immunohistochemistry in human and mouse samples and Immunofluorescence in human and mouse samples. All other applications and species not yet tested.

**Isotype**

IgG

**Clonality**

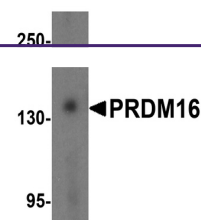
Polyclonal

**MW**

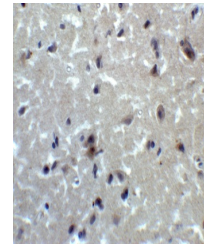
Predicted: 109, 120, 140 kDa Observed: 140 kDa

**Uniprot ID**
[Q9HAZ2](#)
**NCBI**
[CAH71530](#)
**Dilution Range**

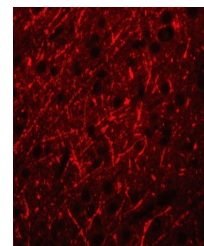
PRDM16 antibody can be used for detection of PRDM16 by Western blot at 1 µg/mL. Antibody can also be used for immunohistochemistry starting at 2 µg/mL. For immunofluorescence start at 20 µg/mL. Antibody validated: Western Blot in human samples; Immunohistochemistry in human and



Western blot analysis of PRDM16 in K562 ...



Immunohistochemistry of PRDM16 in human ...



Immunofluorescence of PRDM16 in Human Br...