
Product Datasheet

TNFRSF10C Antibody (orb1239906)

Description

TNFRSF10C Antibody

Species/Host

Rabbit

Reactivity

Human, Mouse, Rat

Conjugation

Unconjugated

Tested

ELISA, ICC, IF, WB

Applications
Immunogen

DcR1 antibody was raised against a peptide corresponding to amino acids in a extracellular domain of human DcR1 precursor. The immunogen is located within amino acids 140 - 190 of DcR1.

Target

TNFRSF10C

Preservatives

DcR1 Antibody is supplied in PBS containing 0.02% sodium azide.

Form/Appearance

Liquid

Concentration

1 mg/ml

Storage

DcR1 antibody can be stored at 4°C for three months and -20°C, stable for up to one year. As with all antibodies care should be taken to avoid repeated freeze thaw cycles. Antibodies should not be exposed to prolonged high temperatures.

Note

For research use only

Application notes

DcR1 antibody can be used for detection of DcR1 by Western blot 0.5 µg/mL. An approximate 65 kDa band can be detected. Antibody can also be used for immunocytochemistry starting at 10 µg/mL. For immunofluorescence start at 20 µg/mL. Antibody validated: Western Blot in human samples; Immunocytochemistry in human samples and Immunofluorescence in human samples. All other applications and species not yet tested.

Isotype

IgG

Clonality

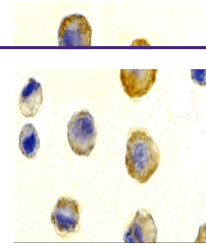
Polyclonal

MW

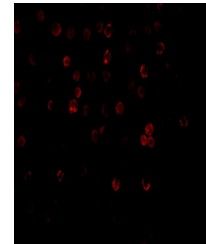
65 kDa

Uniprot ID
[O14798](#)
NCBI
[AF012536](#)
Dilution Range

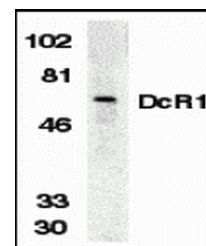
DcR1 antibody can be used for detection of DcR1 by Western blot 0.5 µg/mL. An approximate 65 kDa band can be detected. Antibody can also be used for immunocytochemistry starting at 10 µg/mL. For



Immunocytochemistry of DcR1 in HeLa cell...



Immunofluorescence of DcR1 in HeLa cells...



Western blot analysis of DcR1 in HeLa wh...