

---

## Product Datasheet

### DDA1 Antibody (orb1239898)

**Description**

DDA1 Antibody

**Species/Host**

Rabbit

**Reactivity**

Human, Mouse, Rat

**Conjugation**

Unconjugated

**Tested**

ELISA, IF, IHC-P, WB

**Applications**
**Immunogen**

DDA1 antibody was raised against an 18 amino acid synthetic peptide near the carboxy terminus of human DDA1. The immunogen is located within the last 50 amino acids of DDA.

**Target**

DDA1

**Preservatives**

DDA Antibody is supplied in PBS containing 0.02% sodium azide.

**Form/Appearance**

Liquid

**Concentration**

1 mg/mL

**Storage**

DDA antibody can be stored at 4°C for three months and -20°C, stable for up to one year. As with all antibodies care should be taken to avoid repeated freeze thaw cycles. Antibodies should not be exposed to prolonged high temperatures.

**Note**

For research use only

**Application notes**

DDA1 antibody can be used for detection of DDA1 by Western blot at 1 µg/mL. Antibody can also be used for immunohistochemistry starting at 5 µg/mL. For immunofluorescence start at 20 µg/mL. Antibody validated: Western Blot in mouse samples; Immunohistochemistry in mouse samples and Immunofluorescence in mouse samples. All other applications and species not yet tested.

**Isotype**

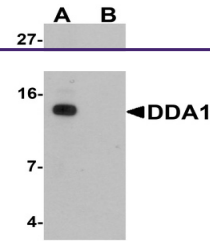
IgG

**Clonality**

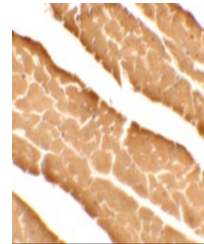
Polyclonal

**Uniprot ID**
[Q9BW61](#)
**NCBI**
[NP\\_003253](#)
**Dilution Range**

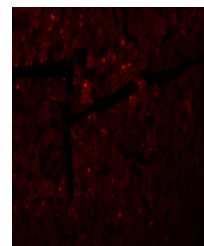
DDA1 antibody can be used for detection of DDA1 by Western blot at 1 µg/mL. Antibody can also be used for immunohistochemistry starting at 5 µg/mL. For immunofluorescence start at 20 µg/mL. Antibody validated: Western Blot in mouse samples; Immunohistochemistry in mouse samples and



Western blot analysis of DDA1 in mouse h...



Immunohistochemistry of DDA1 in mouse he...



Immunofluorescence of DDA1 in mouse hear...