
Product Datasheet

DEPDC1B Antibody (orb1239888)

Description

DEPDC1B Antibody

Species/Host

Rabbit

Reactivity

Human

Conjugation

Unconjugated

Tested Applications

ELISA, IHC-P, WB

Immunogen

DEPDC1B antibody was raised against a 19 amino acid peptide near the carboxy terminus of human DEPDC1B. The immunogen is located within the last 50 amino acids of DEPDC1B.

Target

DEPDC1B

Preservatives

DEPDC1B antibody is supplied in PBS containing 0.02% sodium azide.

Form/Appearance

Liquid

Concentration

1 mg/mL

Storage

DEPDC1B antibody can be stored at 4°C for three months and -20°C, stable for up to one year.

Note

For research use only

Application notes

DEPDC1B antibody can be used for detection of DEPDC1B by Western blot at 1 - 2 µg/ml. Antibody can also be used for immunohistochemistry starting at 5 µg/mL. Antibody validated: Western Blot in human samples and Immunohistochemistry in human samples. All other applications and species not yet tested.

Isotype

IgG

Clonality

Polyclonal

MW

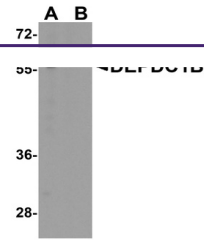
Predicted: 58 kDa Observed: 57 kDa

Uniprot ID
[Q8WUY9](#)
NCBI
[NP_060839](#)
Dilution Range

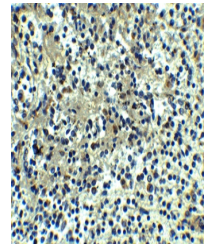
DEPDC1B antibody can be used for detection of DEPDC1B by Western blot at 1 - 2 µg/ml. Antibody can also be used for immunohistochemistry starting at 5 µg/mL. Antibody validated: Western Blot in human samples and Immunohistochemistry in human samples. All other applications and species not yet tested.

Expiration Date

12 months from date of receipt.



Western blot analysis of DEPDC1B in K562...



Immunohistochemistry of DEPDC1B in human...