
Product Datasheet

Dffb Antibody (orb1239885)

Description

Dffb Antibody

Species/Host

Rabbit

Reactivity

Human

Conjugation

Unconjugated

Tested Applications

ELISA, ICC, IF, WB

Immunogen

DFF40 antibody was raised against a 16 amino acid peptide near the amino terminus of human DFF40. The immunogen is located within the first 50 amino acids of DFF40.

Target

Dffb

Preservatives

DFF40 Antibody is supplied in PBS containing 0.02% sodium azide.

Form/Appearance

Liquid

Concentration

1 mg/ml

Storage

DFF40 antibody can be stored at 4°C for three months and -20°C, stable for up to one year. As with all antibodies care should be taken to avoid repeated freeze thaw cycles. Antibodies should not be exposed to prolonged high temperatures.

Note

For research use only

Application notes

DFF40 antibody can be used for detection of DFF40 by Western blot at 0.5 µg/mL. A 40 kDa band can be detected. Antibody can also be used for immunocytochemistry starting at 5 µg/mL. For immunofluorescence start at 20 µg/mL. Antibody validated: Western Blot in human samples; Immunocytochemistry in human samples and Immunofluorescence in human samples. All other applications and species not yet tested.

Isotype

IgG

Clonality

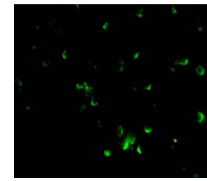
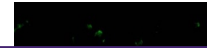
Polyclonal

MW

40 kDa

Uniprot ID
[O54788](#)
NCBI
[NP_031885](#)
Dilution Range

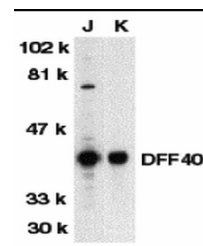
DFF40 antibody can be used for detection of DFF40 by Western blot at 0.5 µg/mL. A 40 kDa band can be detected. Antibody can also be used for immunocytochemistry starting at 5 µg/mL. For



Immunofluorescence of DFF40 in Jurkat ce...



Immunocytochemistry of DFF40 in Jurkat c...



Western blot analysis of DFF40 in Jurkat...