
Product Datasheet

DFFA Antibody (orb1239883)

Description

DFFA Antibody

Species/Host

Rabbit

Reactivity

Human

Conjugation

Unconjugated

Tested

ELISA, ICC, IF, WB

Applications
Immunogen

DFF45 antibody was raised against a 19 amino acid peptide near the carboxy terminus of human DFF45. The immunogen is located within the last 50 amino acids of DFF45.

Target

DFFA

Preservatives

DFF45 Antibody is supplied in PBS containing 0.02% sodium azide.

Form/Appearance

Liquid

Concentration

1 mg/ml

Storage

DFF45 antibody can be stored at 4°C for three months and -20°C, stable for up to one year. As with all antibodies care should be taken to avoid repeated freeze thaw cycles. Antibodies should not be exposed to prolonged high temperatures.

Note

For research use only

Application notes

DFF45 antibody can be used for detection of DFF45 and one of the cleaved fragments of DFF45 by Western blot at at 0.5 - 1 µg/mL and for immunoprecipitation. A 45 kDa band can be detected in non-apoptotic cells. Antibody can also be used for immunocytochemistry starting at 5 µg/mL. Antibody validated: Western Blot in human samples; Immunocytochemistry in human samples and Immunofluorescence in human samples. All other applications and species not yet tested.

Isotype

IgG

Clonality

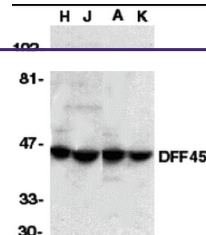
Polyclonal

MW

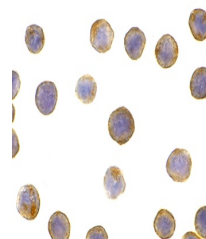
45 kDa

Uniprot ID
[O00273](#)
NCBI
[NP_004392](#)
Dilution Range

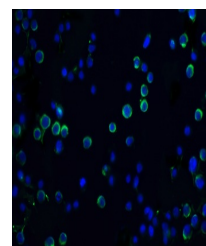
DFF45 antibody can be used for detection of DFF45 and one of the cleaved fragments of DFF45 by Western blot at at 0.5 - 1 µg/ml and for



Western blot analysis of DFF45 in HeLa (...



Immunocytochemistry of DFF45 in HeLa cel...



Immunofluorescence of DFF45 in HeLa cell...