
Product Datasheet

DIS3L2 Antibody (orb1239880)

Description

DIS3L2 Antibody

Species/Host

Rabbit

Reactivity

Human, Mouse, Rat

Conjugation

Unconjugated

Tested

ELISA, WB

Applications
Immunogen

DIS3L2 antibody was raised against a 17 amino acid peptide near the carboxy terminus of human DIS3L2. The immunogen is located within amino acids 720 - 770 of DIS3L2.

Target

DIS3L2

Preservatives

DIS3L2 antibody is supplied in PBS containing 0.02% sodium azide.

Form/Appearance

Liquid

Concentration

1 mg/mL

Storage

DIS3L2 antibody can be stored at 4°C for three months and -20°C, stable for up to one year.

Note

For research use only

Application notes

DIS3L2 antibody can be used for detection of DIS3L2 by Western blot at 1 - 2 µg/ml. Antibody can also be used for immunohistochemistry starting at 5 µg/mL. Antibody validated: Western Blot in mouse samples and Immunohistochemistry in rat samples. All other applications and species not yet tested.

Isotype

IgG

Clonality

Polyclonal

MW

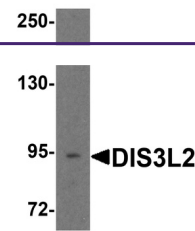
Predicted: 97 kDa Observed: 94 kDa

Uniprot ID
[Q8IYB7](#)
NCBI
[NP_689596](#)
Dilution Range

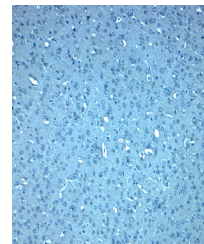
DIS3L2 antibody can be used for detection of DIS3L2 by Western blot at 1 - 2 µg/ml. Antibody can also be used for immunohistochemistry starting at 5 µg/mL. Antibody validated: Western Blot in mouse samples and Immunohistochemistry in rat samples. All other applications and species not yet tested.

Expiration Date

12 months from date of receipt.



Western blot analysis of DIS3L2 in 3T3 c...



Immunohistochemistry of DIS3L2 in rat br...