

---

## Product Datasheet

### DNAL1 Antibody (orb1239875)

**Description**

DNAL1 Antibody

**Species/Host**

Rabbit

**Reactivity**

Human, Mouse, Rat

**Conjugation**

Unconjugated

**Tested Applications**

ELISA, ICC, IF, WB

**Immunogen**

DNAL1 antibody was raised against a 17 amino acid synthetic peptide from near the carboxy terminus of human DNAL1. The immunogen is located within the last 50 amino acids of DNAL1.

**Target**

DNAL1

**Preservatives**

DNAL1 Antibody is supplied in PBS containing 0.02% sodium azide.

**Form/Appearance**

Liquid

**Concentration**

1 mg/mL

**Storage**

DNAL1 antibody can be stored at 4°C for three months and -20°C, stable for up to one year. As with all antibodies care should be taken to avoid repeated freeze thaw cycles. Antibodies should not be exposed to prolonged high temperatures.

**Note**

For research use only

**Application notes**

DNAL1 antibody can be used for detection of DNAL1 by Western blot at 1 - 2 µg/mL. Antibody can also be used for immunocytochemistry starting at 2.5 µg/mL. Antibody validated: Western Blot in mouse samples; Immunocytochemistry in mouse samples and Immunofluorescence in mouse samples. All other applications and species not yet tested.

**Isotype**

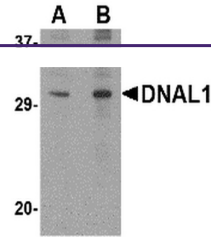
IgG

**Clonality**

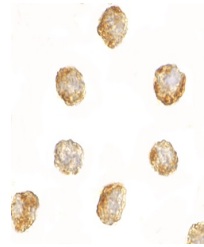
Polyclonal

**Uniprot ID**
[Q4LDG9](#)
**NCBI**
[NP\\_113615](#)
**Dilution Range**

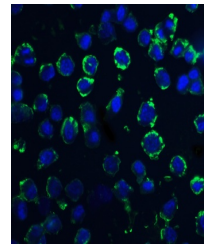
DNAL1 antibody can be used for detection of DNAL1 by Western blot at 1 - 2 µg/mL. Antibody can also be used for immunocytochemistry starting at 2.5 µg/mL. Antibody validated: Western Blot in mouse samples; Immunocytochemistry in mouse samples and Immunofluorescence in mouse samples. All other applications and species not yet tested.



Western blot analysis of DNAL1 in 3T3 ce...



Immunocytochemistry of DNAL1 in 3T3 cell...



Immunofluorescence of DNAL1 in 3T3 cells...