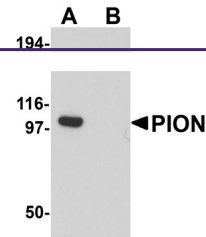


---

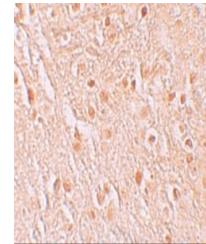
## Product Datasheet

### PION Antibody (orb1239874)

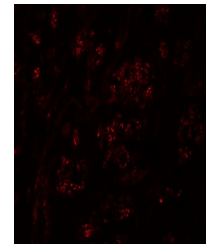
<b>Description</b>	PION Antibody
<b>Species/Host</b>	Rabbit
<b>Reactivity</b>	Human, Mouse, Rat
<b>Conjugation</b>	Unconjugated
<b>Tested Applications</b>	ELISA, IF, IHC-P, WB
<b>Immunogen</b>	PION antibody was raised against a 19 amino acid synthetic peptide near the carboxy terminus of human PION. The immunogen is located within amino acids 770 - 820 of PION.
<b>Target</b>	PION
<b>Preservatives</b>	PION Antibody is supplied in PBS containing 0.02% sodium azide.
<b>Form/Appearance</b>	Liquid
<b>Concentration</b>	1 mg/mL
<b>Storage</b>	PION antibody can be stored at 4°C for three months and -20°C, stable for up to one year. As with all antibodies care should be taken to avoid repeated freeze thaw cycles. Antibodies should not be exposed to prolonged high temperatures.
<b>Note</b>	For research use only
<b>Application notes</b>	PION antibody can be used for detection of PION by Western blot at 0.25 µg/mL. Antibody can also be used for immunohistochemistry starting at 5 µg/mL. For immunofluorescence start at 20 µg/mL. Antibody validated: Western Blot in mouse samples; Immunohistochemistry in human and mouse samples and Immunofluorescence in human and mouse samples. All other applications and species not yet tested.
<b>Isotype</b>	IgG
<b>Clonality</b>	Polyclonal
<b>Uniprot ID</b>	<a href="#">A4D1B5</a>
<b>NCBI</b>	<a href="#">NP_059135</a>
<b>Dilution Range</b>	PION antibody can be used for detection of PION by Western blot at 0.25 µg/mL. Antibody can also be used for immunohistochemistry starting at 5 µg/mL. For immunofluorescence start at 20 µg/mL. Antibody validated: Western Blot in mouse samples;



Western blot analysis of PION in EL4 cel...



Immunohistochemistry of PION in human br...



Immunofluorescence of PION in Human Brai...