
Product Datasheet

DOCK8 Antibody (orb1239872)

Description

DOCK8 Antibody

Species/Host

Rabbit

Reactivity

Human, Mouse, Rat

Conjugation

Unconjugated

Tested Applications

ELISA, IHC-P, WB

Immunogen

DOCK8 antibody was raised against a 17 amino acid peptide near the carboxy terminus of human DOCK8. The immunogen is located within the last 50 amino acids of DOCK8.

Target

DOCK8

Preservatives

DOCK8 antibody is supplied in PBS containing 0.02% sodium azide.

Form/Appearance

Liquid

Concentration

1 mg/mL

Storage

DOCK8 antibody can be stored at 4°C for three months and -20°C, stable for up to one year.

Note

For research use only

Application notes

DOCK8 antibody can be used for detection of DOCK8 by Western blot at 1 - 2 µg/ml. Antibody can also be used for Immunohistochemistry at 5 µg/mL. Antibody validated: Western Blot in mouse samples and Immunohistochemistry in human samples. All other applications and species not yet tested.

Isotype

IgG

Clonality

Polyclonal

MW

Predicted: 166, 220, 231 kDa Observed: 220, 230 kDa

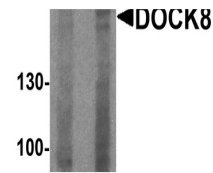
Uniprot ID
[Q8NF50](#)
NCBI
[NP_982272](#)
Dilution Range

DOCK8 antibody can be used for detection of DOCK8 by Western blot at 1 - 2 µg/ml. Antibody can also be used for Immunohistochemistry at 5 µg/mL. Antibody validated: Western Blot in mouse samples and Immunohistochemistry in human samples. All other applications and species not yet tested.

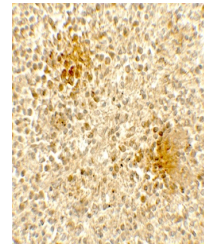
Expiration Date

12 months from date of receipt.

A B



Western blot analysis of DOCK8 in EL4 ce...



Immunohistochemistry of DOCK8 in human

S...