

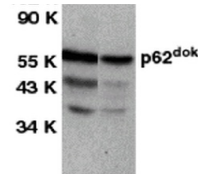
---

## Product Datasheet

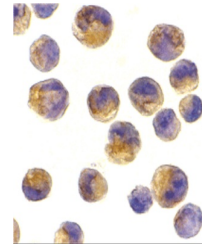
### DOK1 Antibody (orb1239871)

<b>Description</b>	DOK1 Antibody
<b>Species/Host</b>	Rabbit
<b>Reactivity</b>	Human
<b>Conjugation</b>	Unconjugated
<b>Tested Applications</b>	ELISA, ICC, IF, WB
<b>Immunogen</b>	DOK1 antibody was raised against a peptide corresponding to amino acids near the carboxy terminus of human DOK1. The immunogen is located within amino acids 410 - 460 of DOK1.
<b>Target</b>	DOK1
<b>Preservatives</b>	DOK1 Antibody is supplied in PBS containing 0.02% sodium azide.
<b>Form/Appearance</b>	Liquid
<b>Concentration</b>	1 mg/ml
<b>Storage</b>	DOK1 antibody can be stored at 4°C for three months and -20°C, stable for up to one year. As with all antibodies care should be taken to avoid repeated freeze thaw cycles. Antibodies should not be exposed to prolonged high temperatures.
<b>Note</b>	For research use only
<b>Application notes</b>	DOK1 antibody can be used for detection of DOK1 expression by Western blot at 1 µg/mL. A 62 kDa band should be detected. Antibody can also be used for immunocytochemistry starting at 2 µg/mL. For immunofluorescence start at 10 µg/mL. Antibody validated: Western Blot in human samples; Immunocytochemistry in human samples and Immunofluorescence in human samples. All other applications and species not yet tested.
<b>Isotype</b>	IgG
<b>Clonality</b>	Polyclonal
<b>MW</b>	62 kDa
<b>Uniprot ID</b>	<a href="#">Q99704</a>
<b>NCBI</b>	<a href="#">AAC51127</a>
<b>Dilution Range</b>	DOK1 antibody can be used for detection of DOK1 expression by Western blot at 1 µg/mL. A 62 kDa band should be detected. Antibody can also be used for immunocytochemistry starting at 2 µg/mL. For

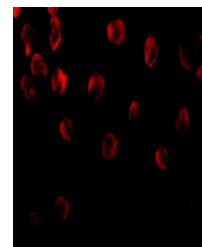
Jurk THP



Western blot analysis of DOK1 in Jurkat ...



Immunocytochemistry of DOK1 in K562 cell...



Immunofluorescence of DOK1 in K562 cells...