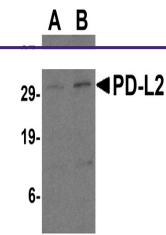
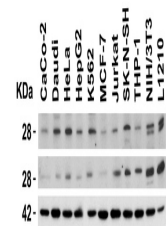

Product Datasheet

PDCD1LG2 Antibody (orb1239861)

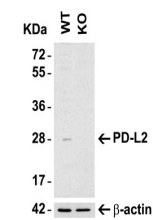
Description	PDCD1LG2 Antibody
Species/Host	Rabbit
Reactivity	Human, Mouse
Conjugation	Unconjugated
Tested Applications	ELISA, IF, IHC-P, WB
Immunogen	Anti-PD-L2 antibody (orb1239861) was raised against a peptide corresponding to 16 amino acids near the center of human PD-L2. The immunogen is located within amino acids 140-190 of PD-L2.
Target	PDCD1LG2
Preservatives	PD-L2 Antibody is supplied in PBS containing 0.02% sodium azide.
Form/Appearance	Liquid
Concentration	1 mg/mL
Storage	PD-L2 antibody can be stored at 4°C for three months and -20°C, stable for up to one year. As with all antibodies care should be taken to avoid repeated freeze thaw cycles. Antibodies should not be exposed to prolonged high temperatures.
Note	For research use only
Isotype	IgG
Clonality	Polyclonal
MW	Predicted: 31kD Observed: 29 kD
Uniprot ID	Q9BQ51
NCBI	NP_079515
Dilution Range	WB: 0.5-4 µg/mL; IHC: 2.5 µg/mL; IF: 20 µg/mL. Antibody validated: Western Blot in human and mouse samples; Immunohistochemistry in mouse samples; Immunofluorescence in mouse samples. All other applications and species not yet tested.
Expiration Date	12 months from date of receipt.



Western Blot Validation in Human Raji Ce...



Independent Antibody Validation (IAV) vi...



KO Validation in HeLa Cells. Loading: 15...