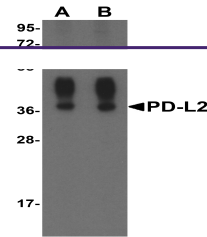
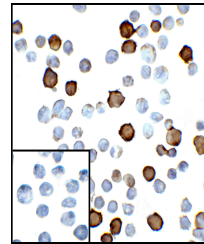

Product Datasheet

PDCD1LG2 Antibody (orb1239856)

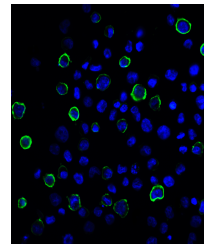
Description	PDCD1LG2 Antibody
Species/Host	Mouse
Reactivity	Human
Conjugation	Unconjugated
Tested Applications	ELISA, FC, ICC, IF, IHC-P, WB
Immunogen	PD-L2 antibody was raised against the extracellular domain of human PD-L2.
Target	PDCD1LG2
Preservatives	PD-L2 Antibody is supplied in PBS containing 0.02% sodium azide and 50% glycerol.
Form/Appearance	Liquid
Concentration	1 mg/mL
Storage	PD-L2 antibody can be stored at 4°C for three months and -20°C, stable for up to one year. As with all antibodies care should be taken to avoid repeated freeze thaw cycles. Antibodies should not be exposed to prolonged high temperatures.
Note	For research use only
Application notes	PD-L2 antibody can be used for detection of PD-L2 by Western blot at 0.5 - 1 µg/mL. Antibody can also be used for immunohistochemistry starting at 2 µg/mL. For immunofluorescence start at 20 µg/mL. Antibody validated: Western Blot in human samples; Immunohistochemistry in human samples; Immunocytochemistry in human samples; Immunofluorescence in human samples and Flow Cytometry in mouse samples. All other applications and species not yet tested.
Isotype	IgG1
Clonality	Monoclonal
MW	Predicted: 30 kDa Observed: 38 kDa
Uniprot ID	P9BQ51
NCBI	NP_079515
Dilution Range	PD-L2 antibody can be used for detection of PD-L2 by Western blot at 0.5 - 1 µg/mL. Antibody can also be used for immunohistochemistry starting at 2 µg/mL. For immunofluorescence start at 20 µg/mL. Antibody validated: Western Blot in human



Western blot analysis of PD-L2 in overex...



Immunocytochemistry of PD-L2 in transfec...



Immunofluorescence of PD-L2 in transfec...