

---

## Product Datasheet

### E2F3 Antibody (orb1239854)

**Description**

E2F3 Antibody

**Species/Host**

Rabbit

**Reactivity**

Human, Mouse

**Conjugation**

Unconjugated

**Tested**

ELISA, IF, IHC-P, WB

**Applications**
**Immunogen**

E2F3 antibody was raised against a 15 amino acid peptide near the center of human E2F3. The immunogen is located within amino acids 150 - 200 of E2F3.

**Target**

E2F3

**Preservatives**

E2F3 antibody is supplied in PBS containing 0.02% sodium azide.

**Form/Appearance**

Liquid

**Concentration**

1 mg/mL

**Storage**

E2F3 antibody can be stored at 4°C for three months and -20°C, stable for up to one year.

**Note**

For research use only

**Application notes**

E2F3 antibody can be used for detection of E2F3 by Western blot at 1 - 2 µg/ml. Antibody can also be used for Immunohistochemistry starting at 5 µg/mL. For immunofluorescence start at 20 µg/mL. Antibody validated: Western Blot in human samples; Immunohistochemistry in human samples and Immunofluorescence in human samples. All other applications and species not yet tested.

**Isotype**

IgG

**Clonality**

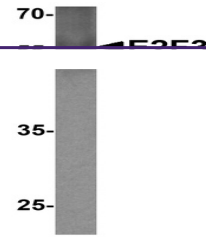
Polyclonal

**MW**

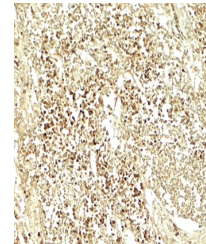
Predicted: 51 kDa Observed: 56 kDa

**Uniprot ID**
[O00716](#)
**NCBI**
[NP\\_001940](#)
**Dilution Range**

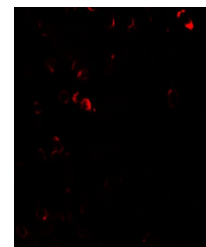
E2F3 antibody can be used for detection of E2F3 by Western blot at 1 - 2 µg/ml. Antibody can also be used for Immunohistochemistry starting at 5 µg/mL. For immunofluorescence start at 20 µg/mL. Antibody validated: Western Blot in human samples; Immunohistochemistry in human samples and Immunofluorescence in human samples. All other applications and species not yet tested.



Western blot analysis of E2F3 in human l...



Immunohistochemistry of E2F3 in human ly...



Immunofluorescence of E2F3 in human lymph...